

March 3rd 2014



Annual Education Report 2012/2013

Raising Achievement Plan 2012-13

Cheshire East Council and its Partners are committed to its strategic aim:

***‘Shaping local provision that addresses the needs of young people early
in order to maximize the learning opportunities for all’***

Contents:

1)	Introduction	Page 3
2)	Cheshire East Schools and their Pupils	Page 4
3)	Achievement during the Early Years	Pages 5-8
4)	Achievement in Primary Schools	Pages 9-19
5)	Achievement in Secondary Schools	Pages 20-27
6)	Post 16	Pages 27-29
7)	Attendance and Exclusions	Pages 30-36

Appendices:

Pages 37 - 51

Appendix 1 - OFSTED Inspections

Appendix 2 - EYFSP school level results 2011 to 2013

Appendix 3 - KS2 School Level Results 2011 to 2013

Appendix 4 - KS4 School Level Results 2011 to 2013

Appendix 5 - Post 16 School Level Results 2011 to 2013

Appendix 6 – Statistical Neighbours

Annual Education Report 2012-13

1) Introduction

This is the Second Annual Education Report to be produced in this format. The overall aim of this report is to produce an overview of educational outcomes for young people across Cheshire East in a format which is accessible to a range of stakeholders. The information is presented in a consistent style which hopefully allows the reader to easily identify trends in performance from Early Years through to Post 16.

Whilst the move to increase school autonomy and promote 'self sustaining self improving' schools is accepted, the role of the Authority remains crucial especially in providing the support and challenge for those schools where rates of improvement need to be accelerated. A significant step forward this year in coordinating resources and increasing accountability across all schools has been through the formation of the Education Partnership Board and the creation of a 3 Year Raising Achievement Plan. This ongoing work to shape and influence the improvements across our 150 schools is gaining real momentum and will form the basis for future improvements over the coming years.

Strengthening partnership working through structured programmes and drawing upon key resources such as those within our Teaching Schools has to be the way forward. Combined with this has to be the adoption of national excellence to that available locally as well as forging more coherent links to Early Help services particularly for our more vulnerable learners.

Each section of the report shows Cheshire East performance and comparator information in graph and tabular format with associated text outlining key messages. Included in each Key Phase is information relating to vulnerable groups including our Cared for Children as well as key areas for development.

Many thanks particularly to those Officers within the Schools' Data & Performance Team for their significant work in generating this report.

Fintan Bradley

*Corporate Manager :
Education Strategy*

Mark Bayley

*Corporate Manager
Standards & Learning*

Anne Gadsden

*Monitoring & Interventions
Manager*

2) **Cheshire East Schools and their Pupils**

Within Cheshire East there are currently:-

1 nursery school	11 Primary Academies
113 maintained Primary schools	12 Secondary Academies
8 maintained Secondary schools	1 Special Academy
3 maintained Special schools	1 Secondary Free School
1 Pupil Referral Unit	

In January 2013, there were 50,328 pupils attending Cheshire East's mainstream schools and Academies, 263 pupils were attending the borough's four special schools and 45 pupils were educated in the Pupil Referral Unit.

The large majority of pupils live in Cheshire East, 96% of primary and 95% of secondary pupils reside in the borough. 11% of primary pupils are entitled to free school meals, compared to 19% nationally and 9% of secondary pupils compared to 16% nationally.

The vast majority of pupils' ethnic background is reported to be White British (90% of primary pupils and 92% of secondary pupils).

Over 100 different first languages are recorded for primary and secondary pupils. However the cohort of pupils who have a first language other than English is only 5% of primary pupils and 4% of secondary pupils. This compares to 18% of primary pupils and 14% of secondary pupils nationally.

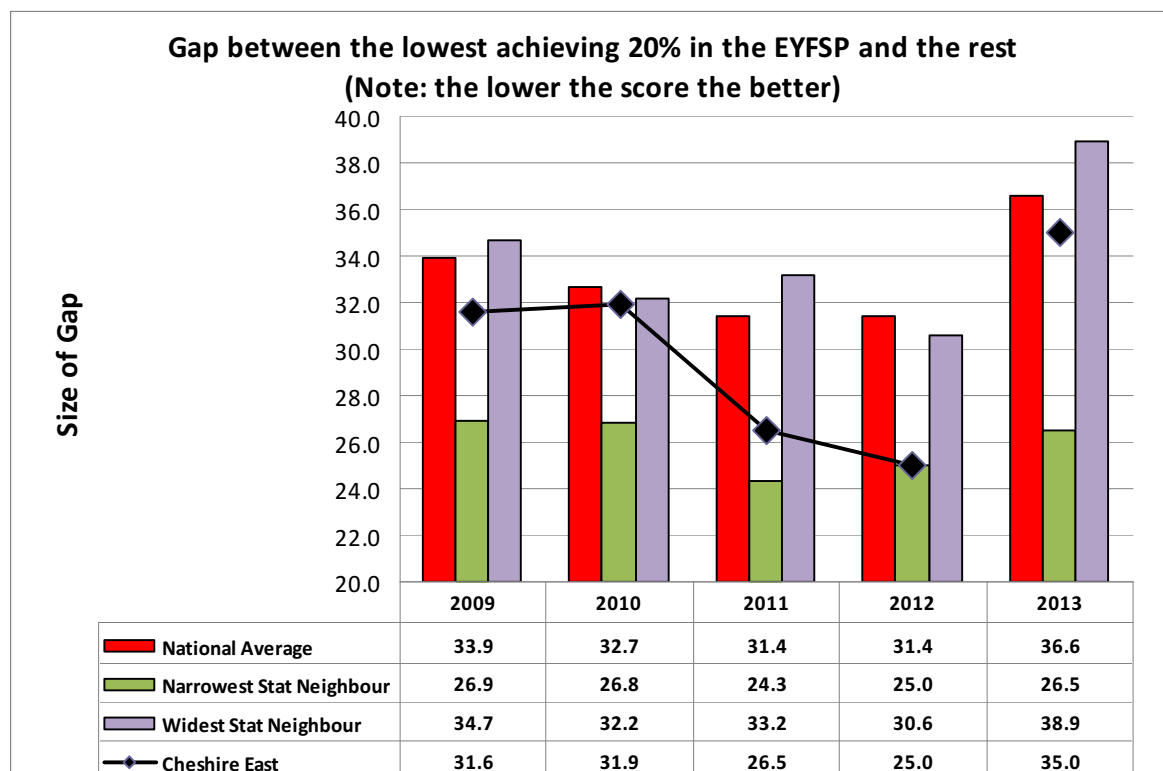
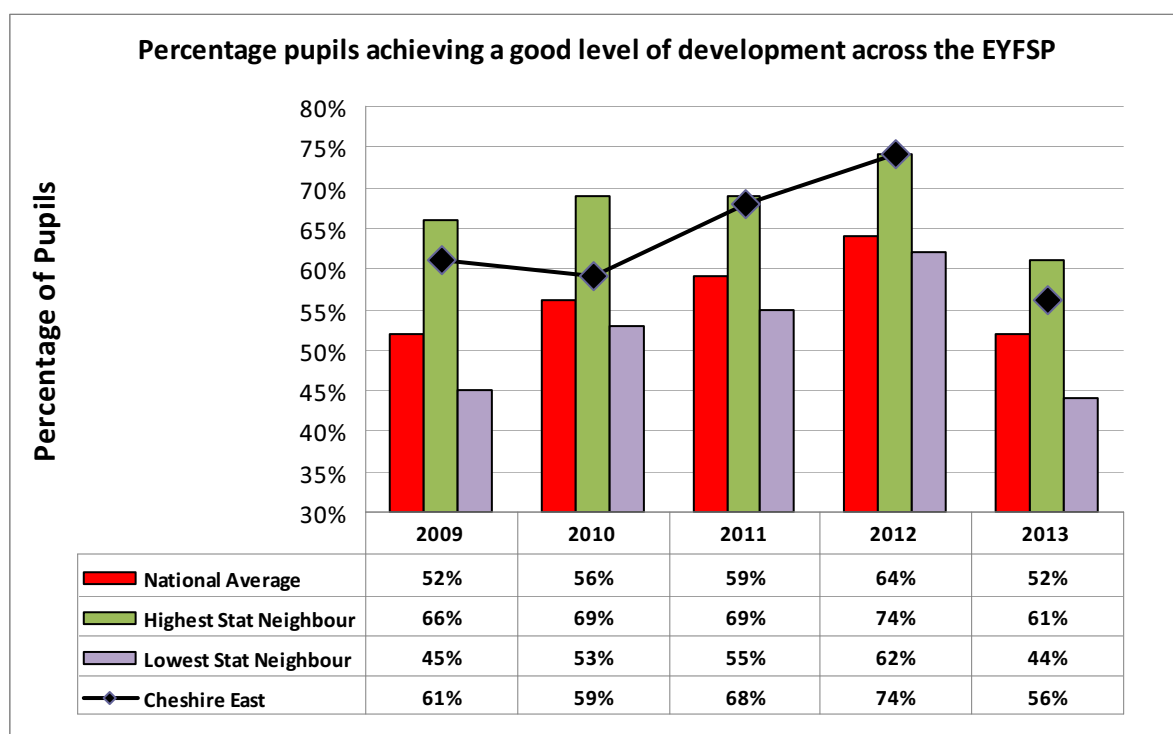
3) **Achievement during the Early Years**

At the end of the reception year children aged 4 – 5 are assessed as Emerging, Expected or Exceeding the 17 early learning goals (ELGs) of the Early Foundation Stage Profile (EYFSP) giving a point scale from 1 to 3. The EYFS framework consists of seven areas of learning covering children's physical, intellectual, emotional and social development. The table on page 7 lists the areas.

Children are considered to have achieved a **good level of development** if they achieve at least the expected level in all eight of the ELGs in the three prime areas of learning and within literacy and mathematics (12 in all). Changes to the EYFSP this year have resulted in significant drops in the number of children achieving a good level of development nationally

Key Messages

- *The new method of assessing the EYFSP means the range of possible scores is much narrower than before with the majority of scores tightly clustered around the median. This makes the gap measurement very volatile, small shifts either way in the median score can have a large impact on the gap as evidenced by the large variation between highest & lowest performing LAs on this measure.*
- *The percentage of pupils achieving a good level of development rose overall from 2009 to 2012, peaking at 74%. Under the new method of assessment, the Cheshire East rate is 56% in 2013.*
- *Changes to the EYFSP in 2013 make comparison with previous years invalid. Cheshire East is above the national average of 52% and North West average of 50%.*
- *Nationally, Cheshire East ranks 32nd equal compared to all local authorities in England.*
- *The achievement gap between the lowest 20% of pupils and the rest in Cheshire East is 35% in 2013. This is wider than nationally, regionally and most of our statistical neighbours.*
- *Cheshire East is ranked 70th amongst all local authorities for this measure.*



Percentage of pupils achieving the expected level in each early learning goal and area of learning

The table below shows the percentage of pupils achieving at least the expected level in each of the 17 early learning goals and the 7 areas of learning of the EYFSP in 2013. The areas which Cheshire East pupils performed best in were Health & Self-care and Technology. The areas in which fewest pupils achieved the expected level and above were Reading, Writing and Numbers. The Cheshire East figures maintain a very consistent relationship to the national figures demonstrating a consistent approach to assessment and moderation in line with national guidelines.

	Cheshire East	National	Highest Stat Neighbour	Lowest Stat Neighbour
Communication and Language (at least expected in ALL Aspects of CLL)	76	72	81	66
• Listening and Attention	83	80	88	74
• Understanding	83	81	88	76
• Speaking	81	78	87	73
Physical Development (at least expected in ALL Aspects of PD)	85	83	88	79
• Moving and Handling	88	87	91	83
• Health and Self-care	90	88	93	86
Personal, Social and Emotional Development (at least expected in ALL Aspects of PSSED)	78	76	83	69
• Self-confidence and Self-awareness	86	85	90	80
• Managing Feelings and Behaviour	84	83	88	78
• Making Relationships	86	85	91	80
Literacy (at least expected in ALL Aspects of Lit)	65	61	70	55
• Reading	73	71	81	66
• Writing	67	62	70	56
Mathematics (at least expected in ALL Aspects of Mat)	71	66	76	59
• Numbers	73	69	77	61
• Shapes, Space and Measurement	79	75	86	71
Understanding the World (at least expected in ALL Aspects of UTW)	78	75	85	70
People and Communities	82	81	88	77
The World	83	81	90	77
Technology	90	88	93	84
Expressive Arts and Design World (at least expected in ALL Aspects of EAD)	81	78	87	71
Exploring and using Media and Materials	85	83	90	77
Being Imaginative	83	81	90	74

The Performance of Vulnerable Groups : Early Years

Cared for Children

Year	Pupils gaining a good level of development (expected or above in all prime areas of learning plus literacy and mathematics)	Cohort Size
2012-13	0%	8
2011-12	71%	16
2010-11	50%	27
2009-10	No data available	20

The cohort size for the virtual school is low this year (8 pupils) of whom none reached the expected level for the Numbers early learning goal making it impossible for anyone to achieve a good level of development.

Key Areas for Development : Early Years

The key priorities for Closing the Gap focus on:

- the performance of boys (particularly in the South locality)
- children accessing Free School Meals
- writing – although the lowest percentage of Cheshire East children achieved expected or above for this early learning goal (67%), it was also the ELG where Cheshire East performed best compared to the national figure (5% above)
- Strong promotion of the Numbers Early Learning Goal.

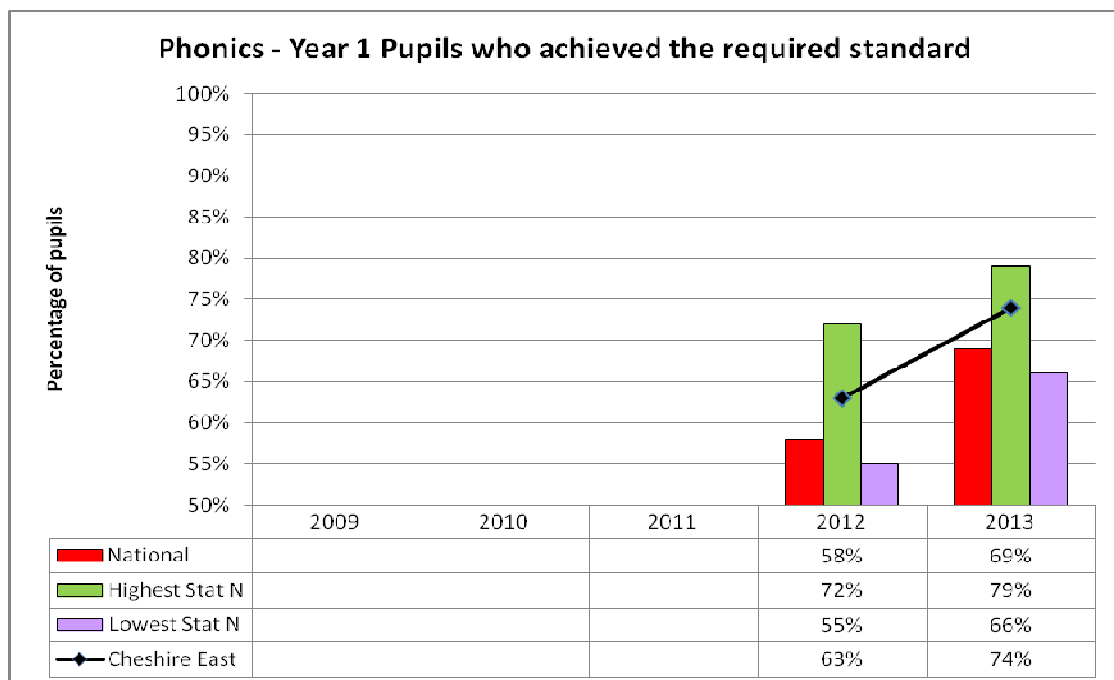
To support this work the Early Years team are further developing the interface with Children Centres and Childminders.

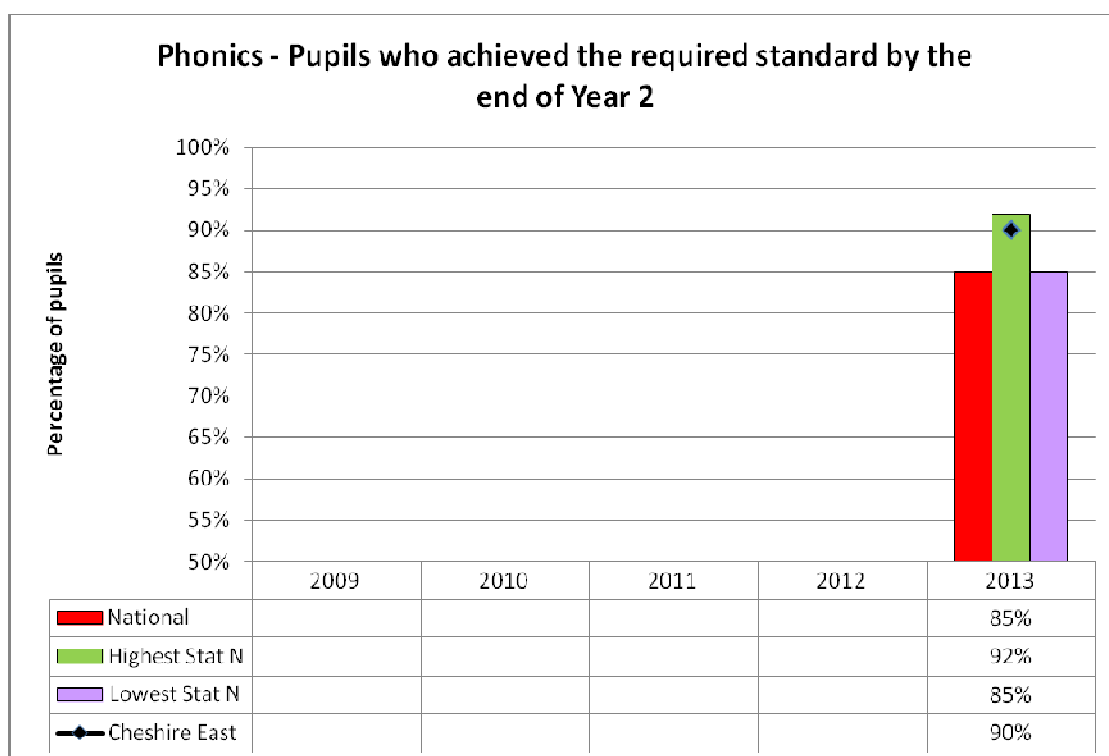
4) Achievement in Primary Schools

Phonics

Key Messages

- The phonics screening check was only introduced in 2012.
- The percentage of Cheshire East Year 1 pupils who achieved the required standard in 2013 was 74%, an increase of 11 percentage points on the 2012 result.
- Nationally, 69% of Year 1 pupils achieved the required standard. Cheshire East ranked equal 19th nationally compared to the 148 local authorities for whom results were published. When compared to Statistical neighbours, Cheshire East was ranked 2nd out of eleven local authorities.
- In 2013, pupils who did not achieve the required standard or did not take the phonics check in Year 1, were required to take it at the end of Year 2.
- In 2013, 90% of Cheshire East Year 2 pupils had achieved the required phonics standard by the end of Year 2. This placed Cheshire East 4th nationally. Cheshire East is 5 percentage points ahead of the National figure of 85% and is 4th when compared to the 148 local authorities. When compared to Statistical neighbours, Cheshire East was ranked 2nd out of eleven local authorities.





Key Areas for Development : Phonics

- Gaps for SEN, EAL and FSM are wider in Cheshire East in 2012 and 2013 than nationally.
- In 2013, Cheshire East EAL children and FSM children were below the national result.
- The gap between girls and boys in Cheshire East was narrower in 2012 and 2013 than nationally, although girls performed better than boys.

Year 1 phonics	2012			2013		
	Boys	Girls	Gap	Boys	Girls	Gap
Cheshire East	61%	66%	5 pp	71%	77%	6 pp
National	54%	62%	8 pp	65%	73%	8 pp

N.B. There were 47% girls in Cheshire East Year 1 in 2013

Year 1 phonics	2012			2013		
	SEN	Non SEN	Gap	SEN	Non SEN	Gap
Cheshire East	27%	69%	42 pp	31%	79%	48 pp
National	24%	65%	41 pp	31%	76%	45 pp

N.B. There were 473 children with SEN in Cheshire East Year 1 in 2013.

Year 1 phonics	2012			2013		
	EAL	Non EAL	Gap	EAL	Non EAL	Gap
Cheshire East	61%	64%	3 pp	68%	74%	6 pp
National	58%	58%	0 pp	69%	69%	0 pp

N.B. There were 227 EAL children in Cheshire East Year 1 in 2013.

Year 1 phonics	2012			2013		
	FSM	Non FSM	Gap	FSM	Non FSM	Gap
Cheshire East	45%	66%	21 pp	55%	76%	21 pp
National	44%	61%	17 pp	56%	72%	16 pp

N.B. There were 471 children eligible for FSM in Cheshire East Year 1 in 2013.

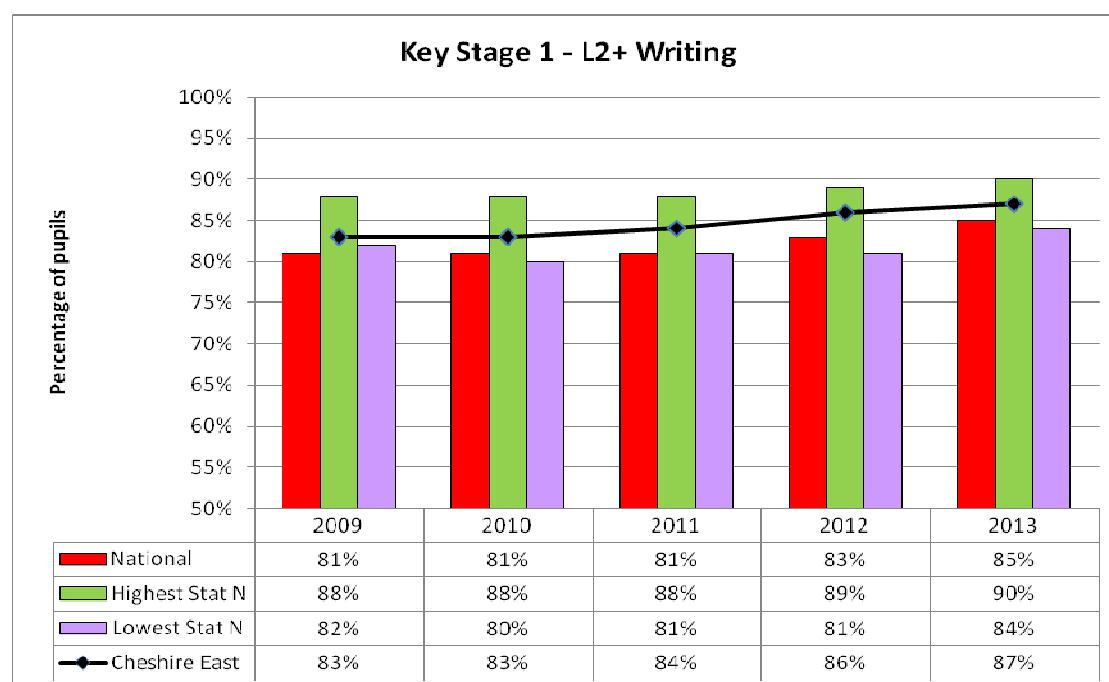
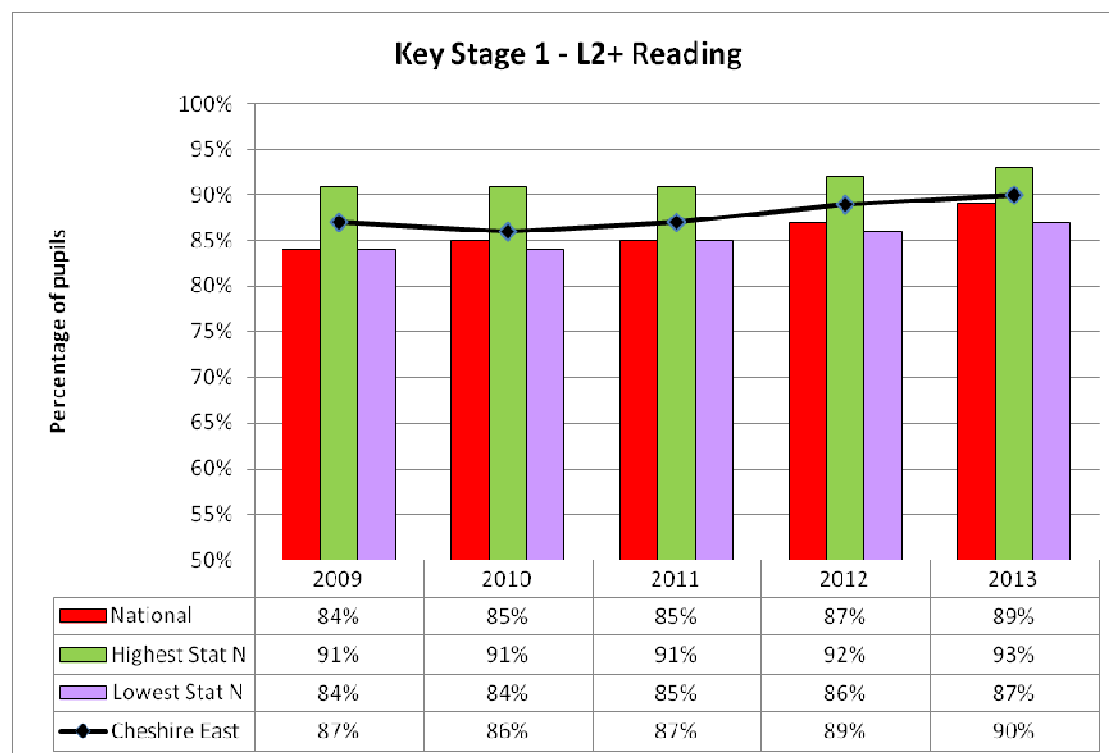
Key Stage 1

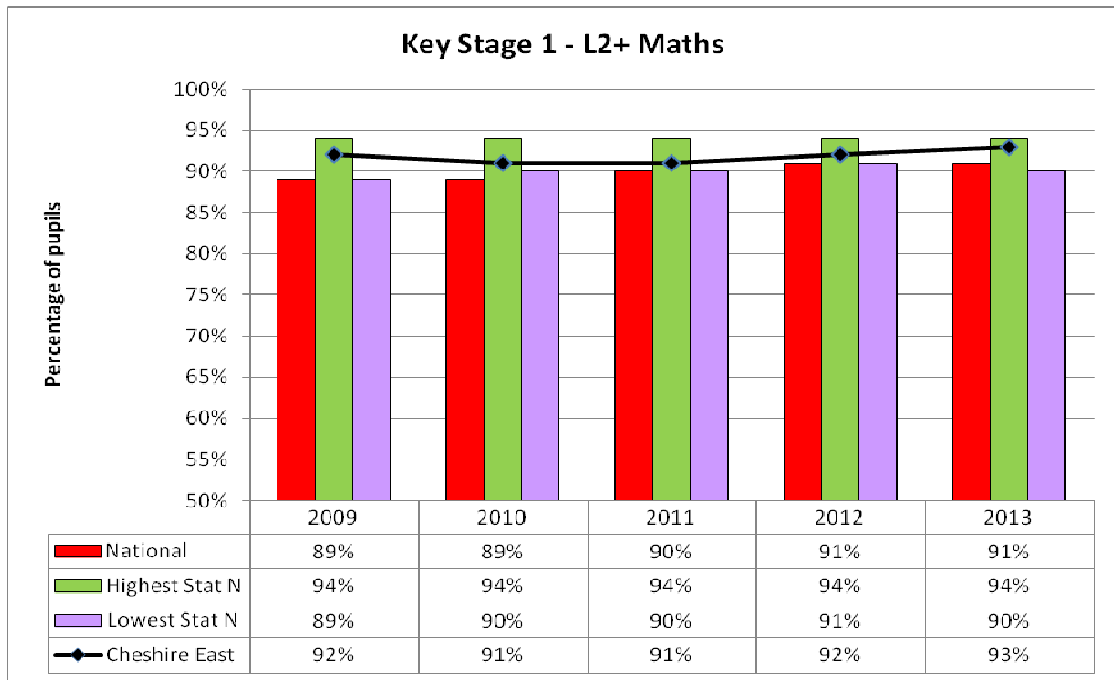
In Primary schools, children are assessed in Year 2, aged 6-7, in speaking & listening, reading, writing, mathematics and science.

Key Messages

- *Cheshire East is achieving consistently above national averages.*
- *In 2013, Cheshire East boys improved their results, compared to last year, in fourteen of the fifteen measures.*
- *In 2013, Cheshire East are ranked no lower than equal 31st out of the 150 local authorities for whom results were published and no lower than equal 7th within our group of 11 statistical neighbours when considering all 15 measures.¹ - Positive*
- *When ranked against our statistical neighbours Cheshire East is equal 3rd for science level 2 and above. The weakest placement is equal 7th for writing at level 2B and above.*
- *The girls results are higher than the boys for all levels and subjects except for mathematics at level 3+ and science level 3+ where boys out perform girls. The same is true nationally.*

¹ Percentage achieving level 2 and above in reading, writing, mathematics and science. Percentage achieving level 2B and above in reading, writing and mathematics. Percentage achieving level 3 and above in reading, writing, mathematics and science and average points score for reading, writing, mathematics and science.

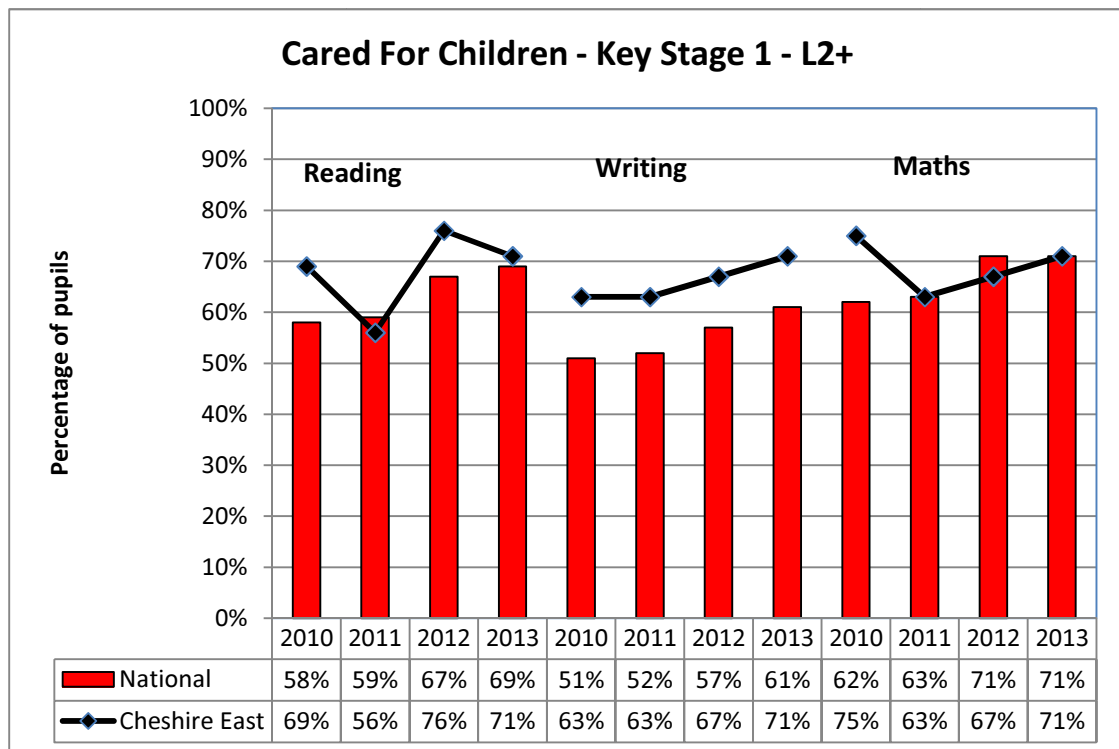




The performance of Vulnerable Groups : Key Stage 1

Cared for Children

Cohort Sizes: 2010 – 22 2011 – 22 2012 – 21 2013 – 15



The graph shows the attainment of children in Year 2 who were in continuous care for at least one year as of 31 March.

Key Areas for Development : Key Stage 1

- The largest gap between girls and boys in Cheshire East is writing at level 2B and above. This has narrowed since last year to 13 percentage points, which is smaller than the National gap of 15 percentage points.
- Cheshire East results at Level 2 and above are lower than national for the following groups:-
 - Reading – EAL, FSM, SEN without a statement, School Action and School Action Plus
 - Writing – EAL, FSM, SEN without a statement, School Action and School Action Plus
 - Mathematics – Mixed ethnicity, SEN without a statement and School Action

Key Stage 2

In Primary schools, children are assessed in Year 6, aged 10-11 in reading and mathematics using test and teacher assessments and in writing by teacher assessment only. Level 6 tests were re-introduced for reading and mathematics in 2012. A number of changes took place in 2013:-

- A new grammar, punctuation and spelling test was introduced (GPS)
- Overall English level was not calculated
- A new measure of reading test, writing teacher assessment and mathematics test combined was introduced to replace English and mathematics combined
- Two levels progress is now being measured for the individual subjects of reading, writing and mathematics
- A “good level 4” measure was introduced. This indicates a child achieves at least a level 4B in the reading test and the mathematics test and achieves at least a level 4 in the writing teacher assessment.

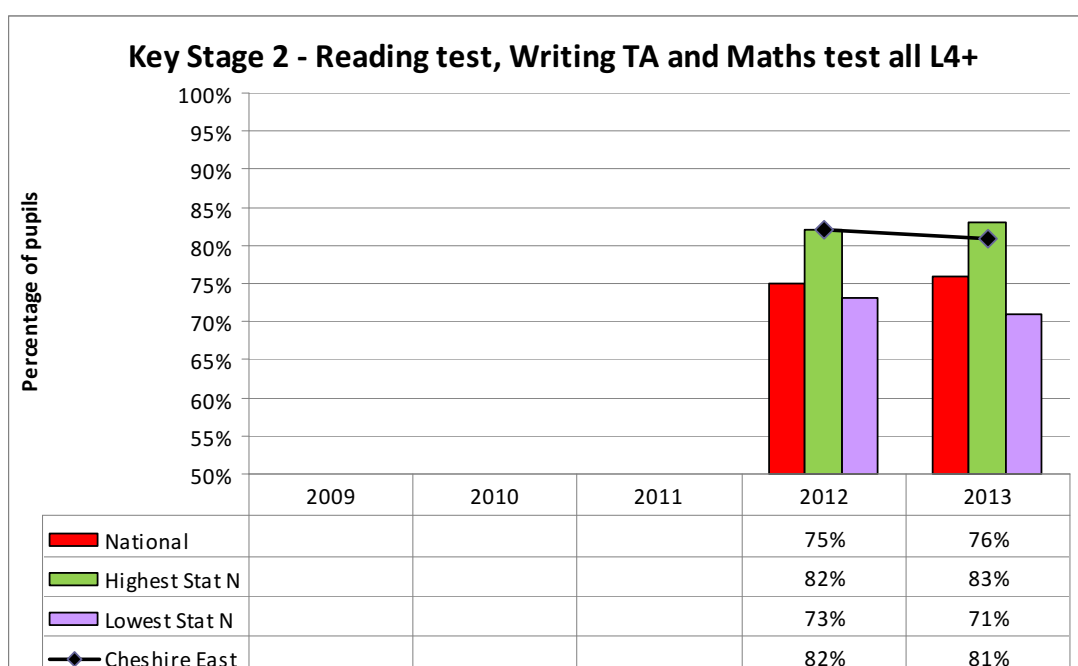
National and local authority level results for the new measures are only available for 2012 and 2013.

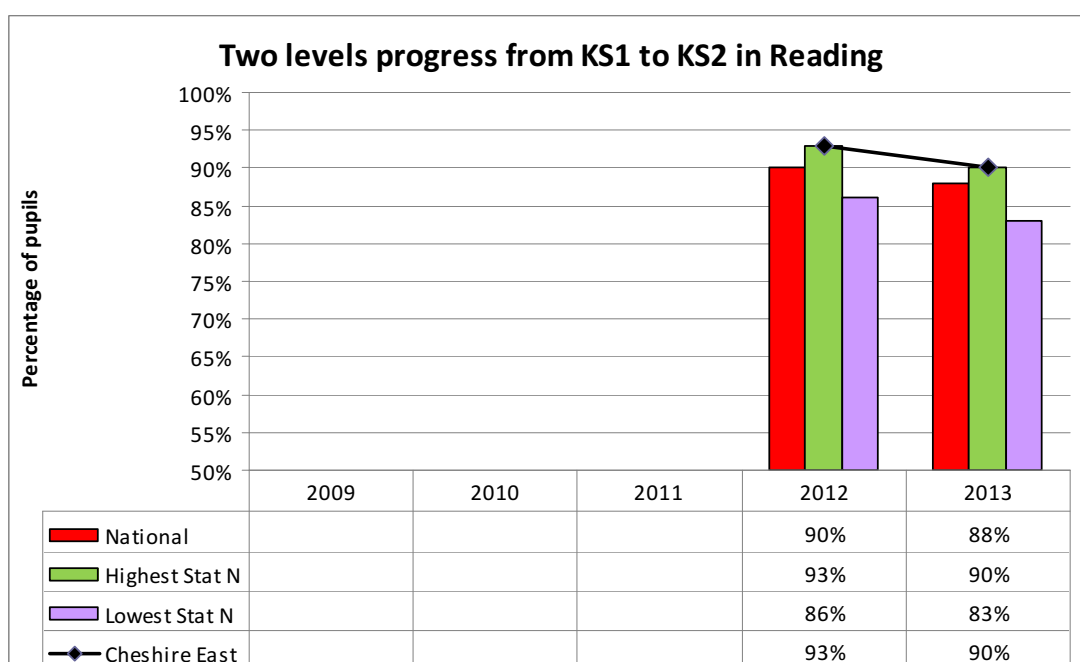
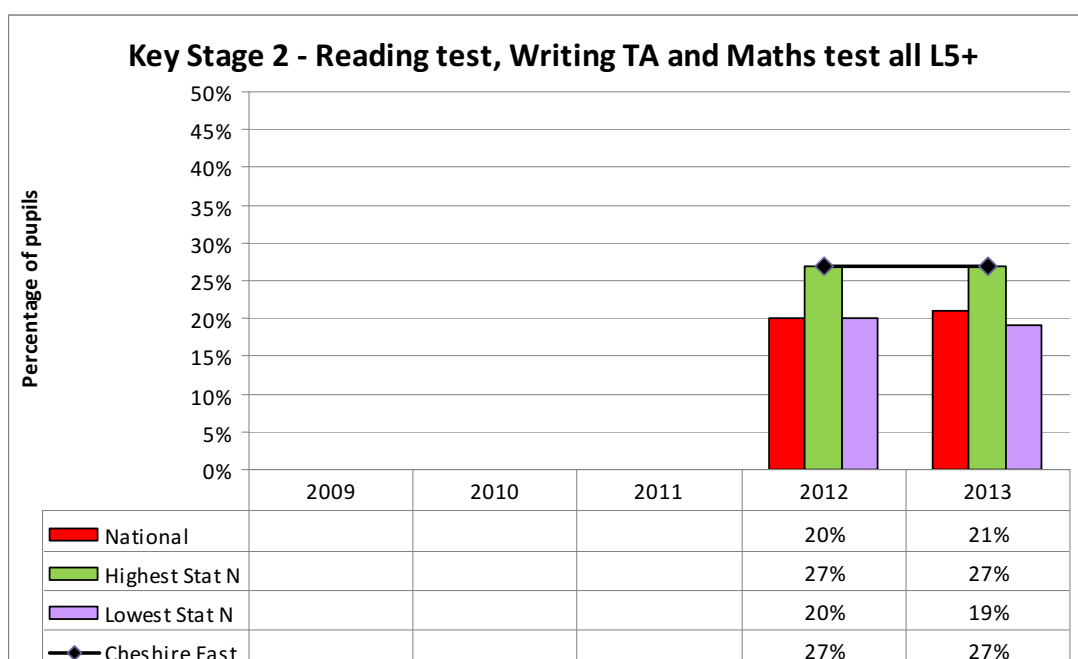
Key Messages

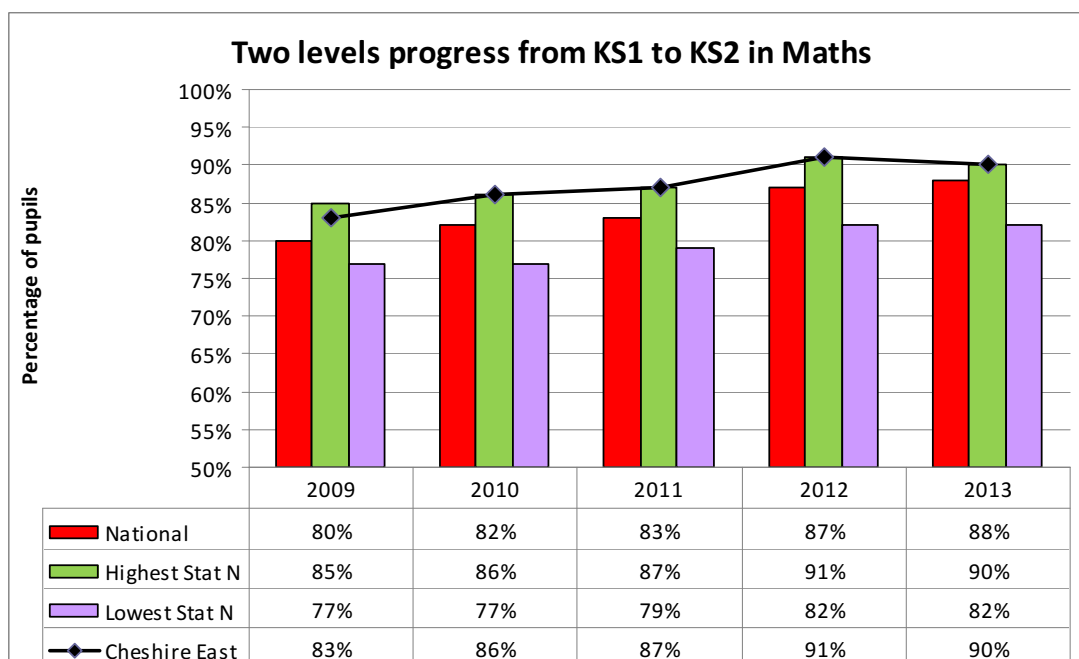
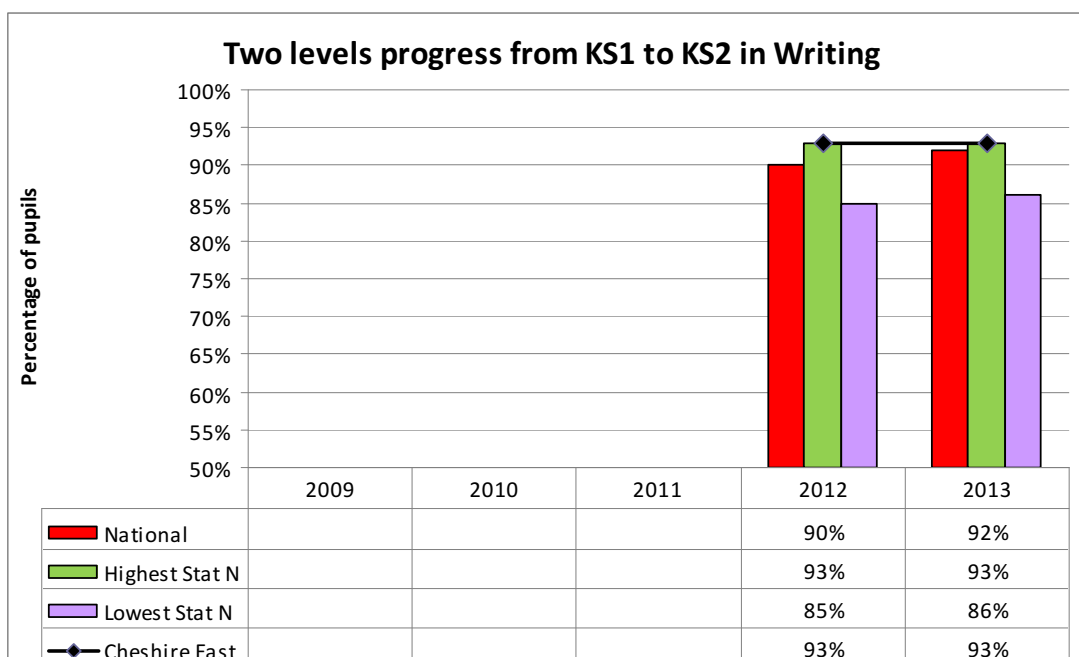
- *Revised results indicate 81% of pupils in Cheshire East achieved level 4 and above in reading, writing and mathematics combined. This is a reduction of 1 percentage point on last year,*

but 5 percentage points above national.

- Level 5 and above in reading, writing and mathematics combined was achieved by 27% of pupils in Cheshire East, which is unchanged compared to last year. This figure is 6 percentage points above national.
- The percentage of Cheshire East pupils achieving two or more levels progress is greater than national for reading, for writing and for mathematics. The authority is ranked equal 1st against our statistical neighbours for all three measures.
- 79% of Cheshire East pupils achieved a level 4 or higher in the new grammar, punctuation and spelling test compared to 74% nationally. This placed us equal 2nd compared to our statistical neighbours.
- The new “good level 4” measure was achieved by 69% of the pupils in Cheshire East. This is higher than the national figure of 63%.
- Three Cheshire East schools were below the national floor standard in 2013. This indicates that less than 60% of their pupils achieved level 4 or higher in all of reading, writing and mathematics and their pupils were below the national medians for expected progress in those three subjects.



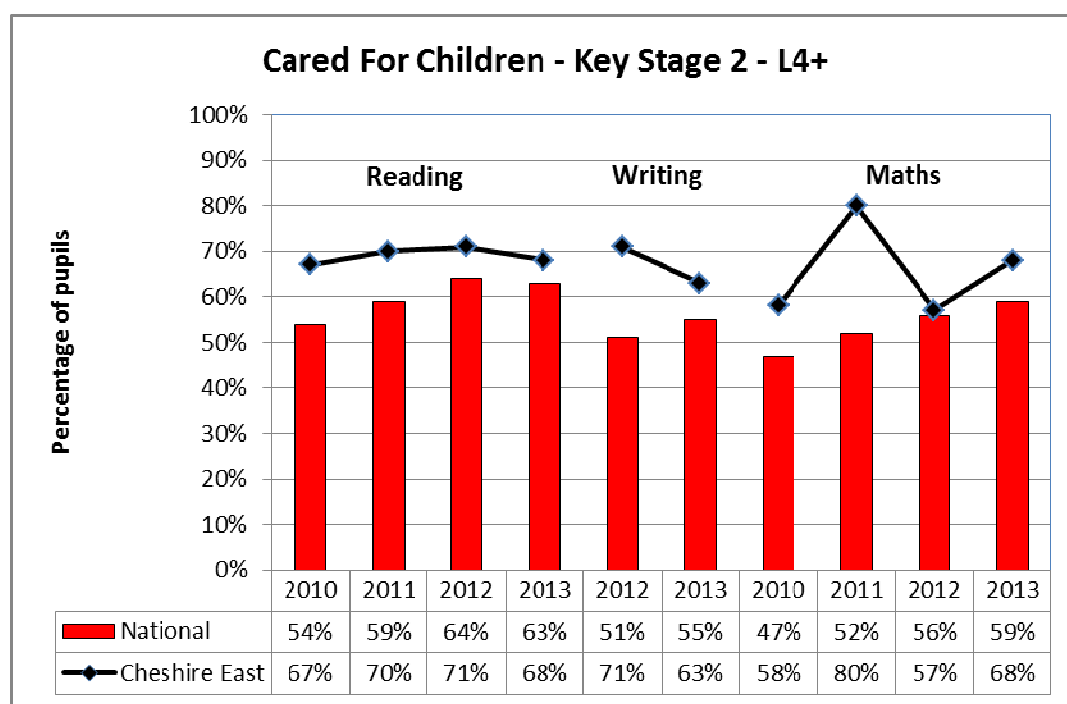




The Performance of Vulnerable Groups : Key Stage 2

Cared for Children

Cohort sizes: 2010 – 10 2011 – 10 2012 – 15 2013 – 20



The graph and table show the attainment of children who were in continuous care for at least one year.

Reading, Writing, Mathematics at level 4 and above	2012			2013		
	Boys	Girls	Gap	Boys	Girls	Gap
Cheshire East	78%	86%	8 pp	79%	83%	4 pp
National	71%	79%	8 pp	72%	79%	7 pp

- Since 2012, the gap between our 659 SEN pupils and non SEN pupils has increased by 1percentage point, but remains better than the national gap.

Reading, Writing, Mathematics at level 4 and above	2012			2013		
	SEN	Non SEN	Gap	SEN	Non SEN	Gap
Cheshire East	40%	92%	52 pp	38%	91%	53 pp
National	33%	88%	55 pp	34%	88%	54 pp

- Since 2012 the gap between our 128 EAL pupils and non EAL pupils has remained the same, but is still above the national figure. The results for our 128 EAL children are now below those nationally.

Reading, Writing, Mathematics at level 4 and above	2012			2013		
	EAL	Non EAL	Gap	EAL	Non EAL	Gap
Cheshire East	74%	83%	9 pp	72%	81%	9 pp
National	73%	75%	2 pp	73%	76%	3 pp

- The Cheshire East gap between FSM and non FSM is unchanged since 2012. This is still wider than nationally. The results for our 357 FSM pupils are now below those nationally.

Reading, Writing, Mathematics at level 4 and above	2012			2013		
	FSM	Non FSM	Gap	FSM	Non FSM	Gap
Cheshire East	60%	85%	25 pp	58%	83%	25 pp
National	59%	78%	19 pp	60%	79%	19 pp

- The Cheshire East gap between disadvantaged² and non disadvantaged children is unchanged since 2012 and is 21 percentage points. It is wider than the national gap of 18 percentage points. The results for our 655 disadvantaged children are now just 1 percentage point above those nationally.

Reading, Writing, Mathematics at level 4 and above	2012			2013		
	Disadv	Non Disadv	Gap	Disadv	Non Disadv	Gap
Cheshire East	65%	86%	21 pp	64%	85%	21 pp
National	61%	80%	19 pp	63%	81%	18 pp

Key Areas for Development : Key Stage 2

- Cheshire East has a Disadvantage gap of 21pp which is above the national rate of 19pp.
- The largest gap between girls and boys in Cheshire East for level 4 and above is for GPS with a difference of 8 percentage points (which is narrower than the national gap of 10). At level 5 and above the largest gap is for writing teacher assessment with a difference of 18 percentage points (which is wider than the national gap of 15).
- The Cheshire East gender gap for Reading, writing and mathematics at level 4 and above has halved and is now better than national, but this is due to poorer performance by girls and better by boys.

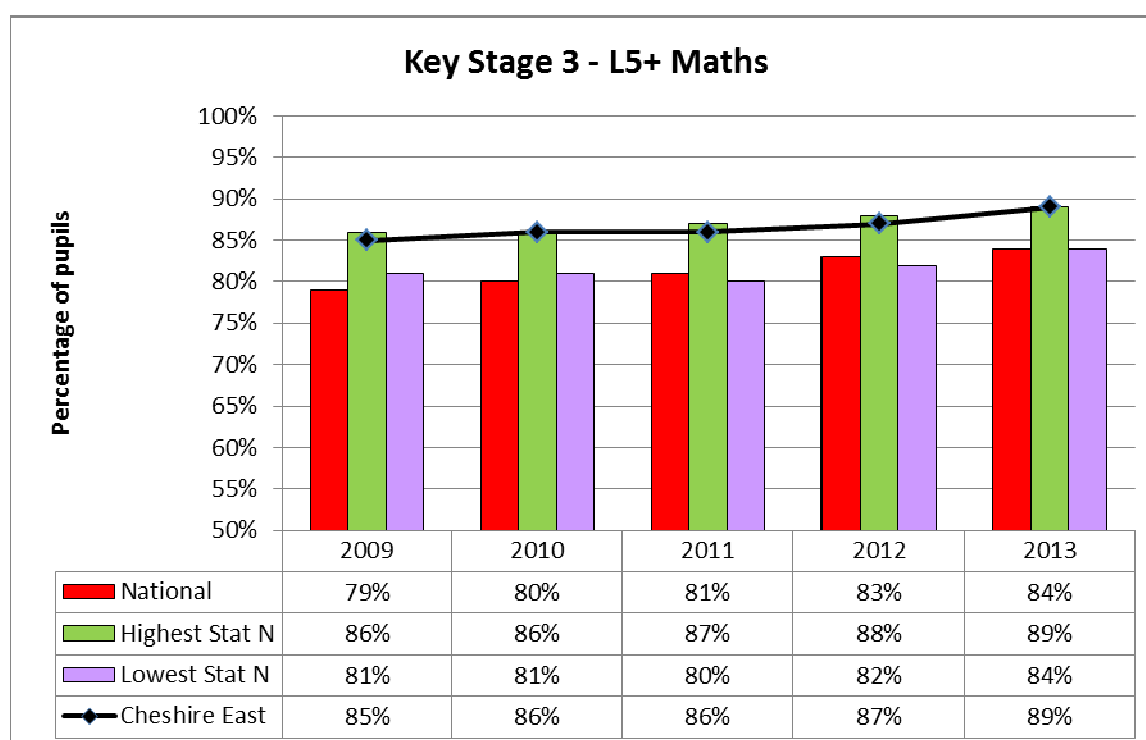
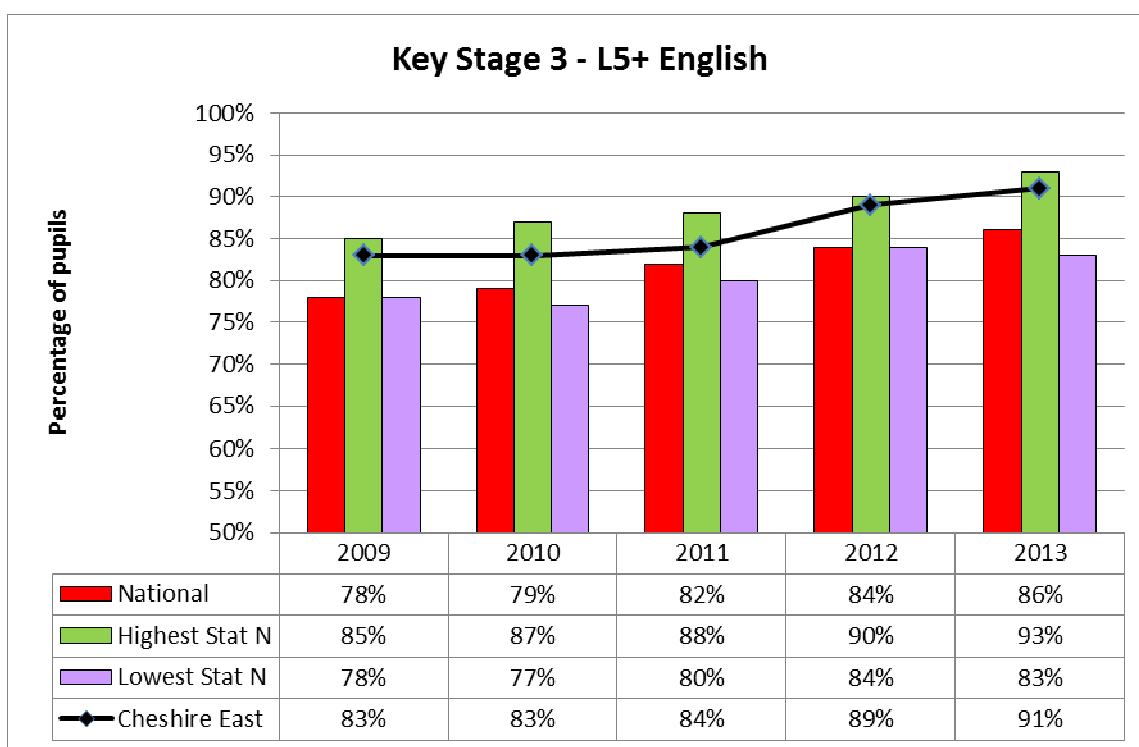
5) Achievement in Secondary Schools

Key Stage 3

In secondary schools, pupils are assessed in Year 9, aged 13-14, in English and mathematics. National curriculum levels are based on teacher assessment. In recent years, schools and Academies have been given flexibility over whether they assess pupils at the end of Year 8 or Year 9. The majority of schools and Academies in Cheshire East still assess at the end of Year 9.

Key Messages

- *Cheshire East is consistently above national results for English at level 5 and above and for mathematics at level 5 and above. Cheshire East results for 2013 have improved since last year by 2 percentage points for both subjects.*
- *English is ranked equal 2nd and mathematics ranked 1st when compared to statistical neighbour, both of which are improvements compared to last year.*
- *In 2013, Cheshire East was 5 percentage points above the national average for English at level 5 and above and for mathematics at level 5 and above.*
- *The percentage of Cheshire East pupils achieving level 5 or higher in English has increased since 2009 by 8 percentage points.*
- *The percentage of pupils in Cheshire East achieving level 5 or higher in mathematics has increased since 2009 by 4 percentage points.*
- *In 2013, Cheshire East girls outperformed the boys for English level 5 and above by 7 percentage points, which is a smaller gap than the national difference of 10 percentage points.*
- *In 2013, the proportion of girls and boys achieving mathematics at level 5 and above is the same in Cheshire East, whereas nationally there is a gap of 2 percentage points.*



The Performance of Vulnerable Groups : Key Stage 3

There is limited information available on national groups.

Both genders have outperformed national figures over the last two years. The gap between boys and girls is either narrower or equivalent to the national gaps.

English L5+	2012			2013		
	Boys	Girls	Gap	Boys	Girls	Gap
Cheshire East	84%	94%	10 pp	88%	95%	7 pp
National	79%	90%	11 pp	81%	91%	10 pp

Maths L5+	2012			2013		
	Boys	Girls	Gap	Boys	Girls	Gap
Cheshire East	86%	88%	2 pp	89%	89%	0 pp
National	82%	84%	2 pp	83%	85%	2 pp

Key Areas for development: Key Stage 3

- To move more targeted interventions to Years 7-9 which will have longer term impact
- To maintain high focus on transition arrangements and shaping appropriate KS3 curriculums to meet the needs of all learners.

Key Stage 4

For secondary schools, the key indicators focus on GCSE examinations. GCSEs are taken by pupils at the end of Key Stage 4, usually in Year 11, aged 15-16.

The tables and graphs below show Cheshire East's achievement for the three national indicators since 2009 with comparisons to national and statistical neighbour averages. Also included is the percentage of pupils achieving the English Baccalaureate².

Key Messages

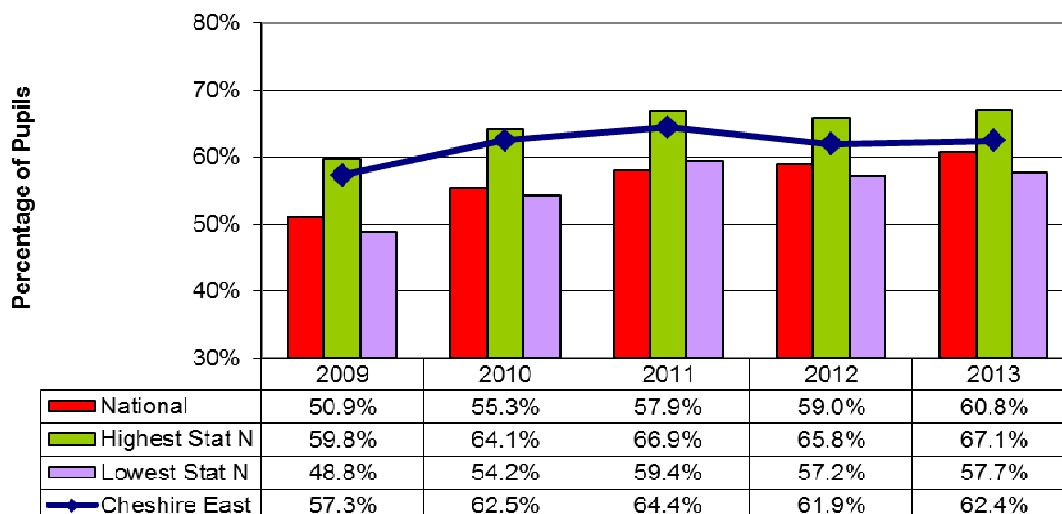
- *In 2013 62.4% of pupils achieved 5+ A*-C grades including English and mathematics GCSE which is above the national average. Cheshire East is ranked 8th when compared to statistical neighbours.*
- *Pupils are expected to make at least three levels of progress between Key Stages 2 and 4. The 2013 results show that progress in English is below the national average, whereas*

² The English Baccalaureate is not a qualification in itself. It is a measure which recognises students' achievements across a core of selected academic subjects - English, maths, a humanity, the sciences and a language

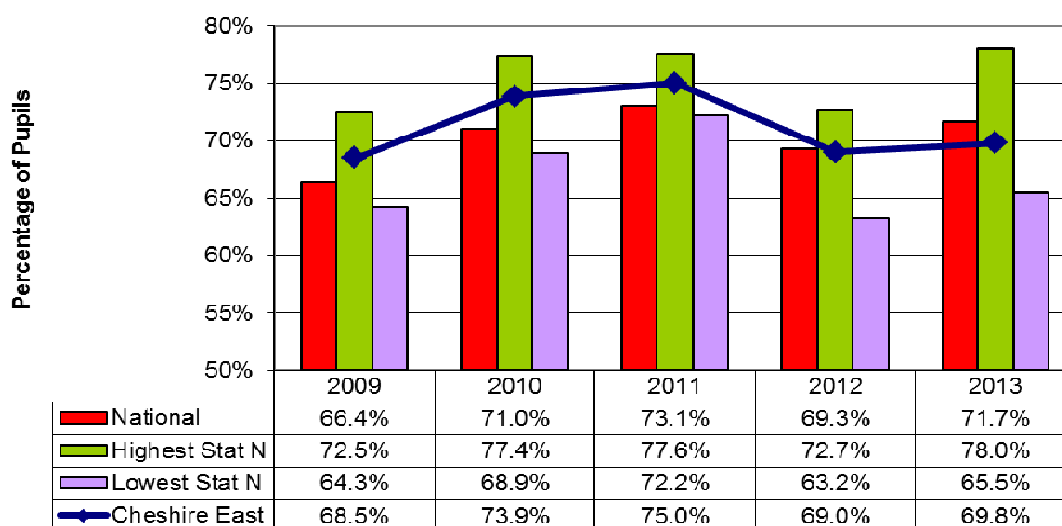
progress in mathematics is in line with the national average . Progress in English is ranked 10th and mathematics is ranked 11th when compared to statistical neighbours.

- *Cheshire East is again higher than the national results for pupils achieving the English Baccalaureate, Cheshire East is ranked 6th when compared to statistical neighbours.*

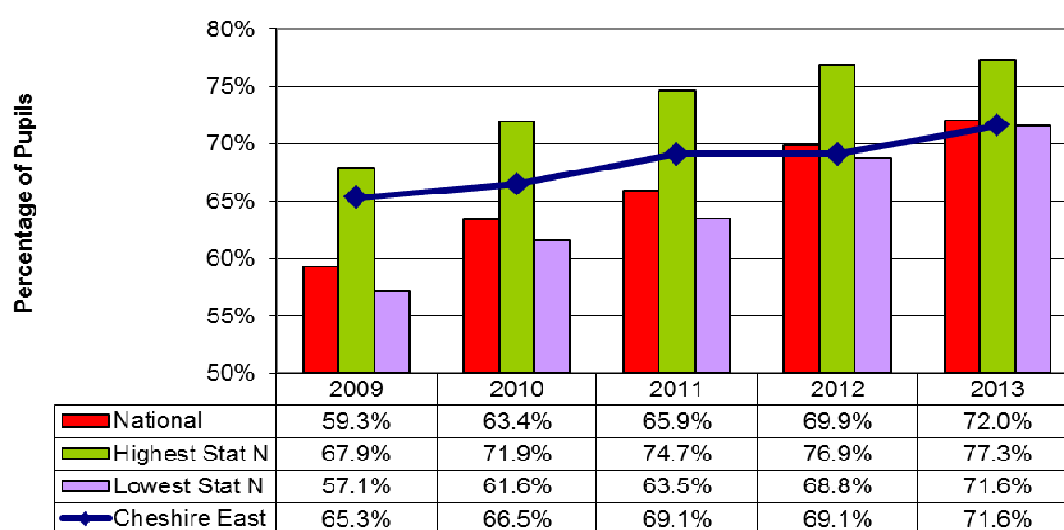
5+ A-C including English and maths at GCSE



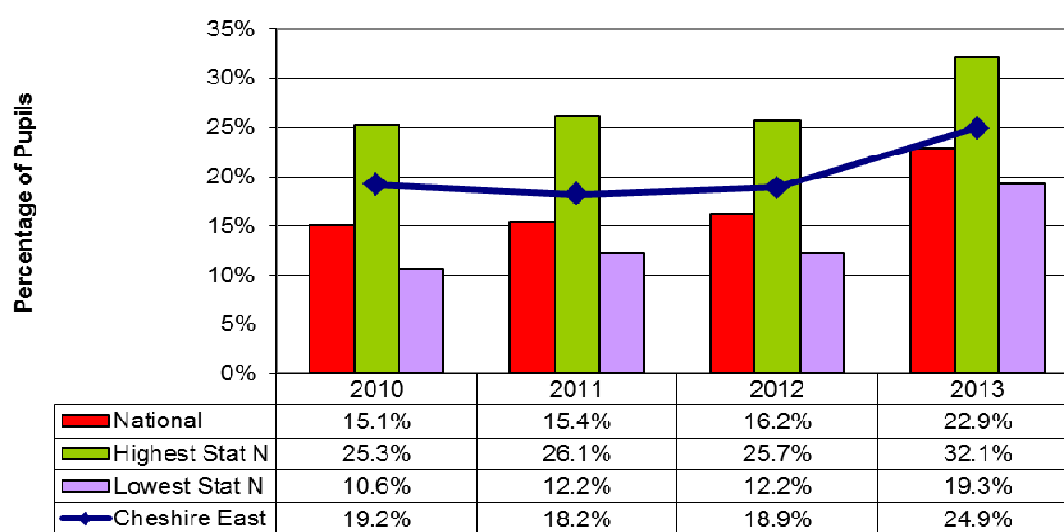
Expected progress between KS2 and KS4 in English



Expected progress between KS2 and KS4 in maths

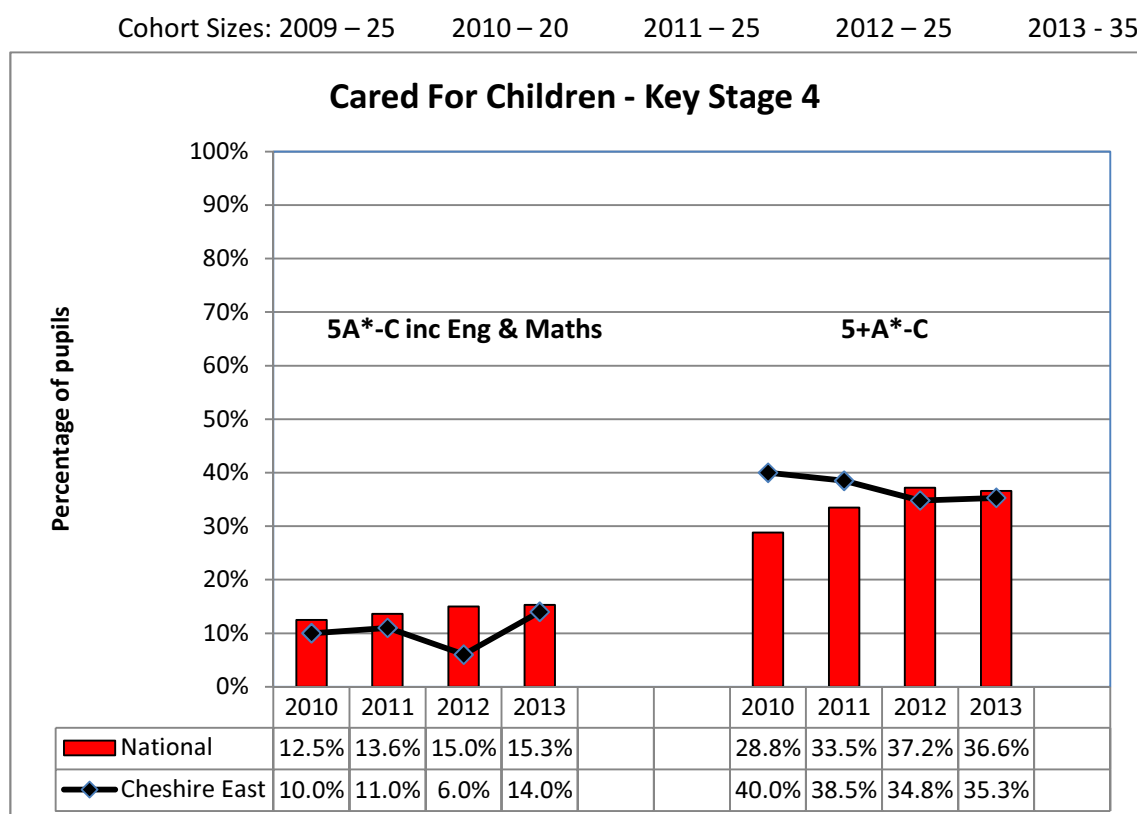


Achieving the English Baccalaureate



The Performance of Vulnerable Groups : Key Stage 4

Cared for Children



The graph shows the attainment of children who were in continuous care for at least one year.

- No school in Cheshire East is below the national floor standard of 40% (5+A*-C including English and maths) but there are 11 and 10 schools that are below the progress standard³ for English and maths respectively.
- The gap between the percentage of boys and girls achieving 5+ A* to C GCSEs including English and maths has increased this year by 1 percentage points.

³ The government assesses mainstream maintained secondary schools' performance against defined "floor standards". Considered against these, a school would be seen as "underperforming" if its Key Stage 4 results are:

- less than 40% of pupils at the end of Key Stage 4 (KS4) achieving 5 or more GCSEs A*-C (or equivalents) including English and maths GCSE; and
- below average % of pupils at the end of KS4 making expected progress in English (national median for 2013 = 73%); and
- below average % of pupils at the end of KS4 making expected progress in maths (national median for 2013 = 73%)

5+A*-C GCSE/equiv inc GCSE English & maths	2009			2010			2011			2012			2013		
	Boys	Girls	Gap	Boys	Girls	Gap	Boys	Girls	Gap	Boys	Girls	Gap	Boys	Girls	Gap
Cheshire East	53%	62%	-9pp	59%	66%	-7pp	60%	68%	-9pp	56%	68%	-12pp	56%	69%	-13pp
National	46%	54%	-8pp	49%	58%	-9pp	54%	62%	-7pp	54%	64%	-10pp	56%	66%	-10pp

- The gap between those pupils eligible for free school meals and those not eligible achieving 5+ A* to C GCSEs including English and maths has increased to at 39 percentage points which is 12 percentage points higher than last year's gap nationally.

5+A*-C GCSE/equiv inc GCSE English & maths	2009			2010			2011			2012			2013		
	FS M	No n FS M	Gap	FS M	No n FS M	Gap	FS M	No n FS M	Gap	FS M	No n FS M	Gap	FS M	No n FS M	Gap
Cheshire East	23 %	60 %	- 37pp	28 %	65 %	- 37pp	30 %	67 %	- 37pp	28 %	65 %	- 37pp	26 %	66 %	- 39pp
National	27 %	54 %	- 28pp	31 %	59 %	- 28pp	35 %	62 %	- 27pp	36 %	63 %	- 26pp	38 %	65 %	- 27pp

- The gap between SEN pupils and non SEN pupils achieving 5+ A* to C GCSEs including English and maths has reduced by 3 percentage points and is now below the gap nationally.

5+A*-C GCSE/equiv inc GCSE English & maths	2009			2010			2011			2012			2013		
	SE N	No n SE N	Gap	SE N	No n SE N	Gap	SE N	No n SE N	Gap	SE N	No n SE N	Gap	SE N	No n SE N	Gap
Cheshire East	16 %	65 %	- 49pp	19 %	69 %	- 50pp	23 %	72 %	- 50pp	23 %	70 %	- 48pp	24 %	69 %	- 45pp
National	17 %	61 %	- 45pp	20 %	66 %	- 46pp	22 %	70 %	- 47pp	22 %	69 %	- 47pp	23 %	71 %	- 47pp

- The gap between EAL and non EAL pupils achieving 5+ A* to C GCSEs including English and maths has increased to 15 percentage points and is higher than the gap nationally.

5+A*-C GCSE/equiv inc GCSE English & maths	2009			2010			2011			2012			2013		
	EAL	No n EAL	Gap	EAL	No n EAL	Gap	EAL	No n EAL	Gap	EAL	No n EAL	Gap	EAL	No n EAL	Gap
Cheshire East	42 %	58 %	- 16pp	44 %	63 %	- 19pp	60 %	65 %	- 5pp	59 %	62 %	- 4pp	48 %	63 %	- 15pp
National	50 %	51 %	- 2pp	54 %	56 %	- 1pp	58 %	59 %	- 1pp	58 %	59 %	- 1pp	60 %	61 %	- 1pp

- The gap between Disadvantaged and non Disadvantaged pupils achieving 5+ A* to C GCSEs including English and maths has increased to 38 percentage points and is higher than the gap nationally.

5+A*-C GCSE/equiv inc GCSE English & maths	2011			2012			2013		
	Disadv	Non Disadv	Gap	Disadv	Non Disadv	Gap	Disadv	Non Disadv	Gap
Cheshire East	33%	70%	-37pp	32%	68%	-36pp	31%	69%	-38pp
National	36%	65%	-29pp	39%	66%	-27pp	41%	68%	-27pp

Key Areas for development: Key Stage 4

- To urgently close the Disadvantage Gap to below the national average by summer 2014.
- To accelerate rates of progress to become well above national thresholds

6) Post 16 Achievement

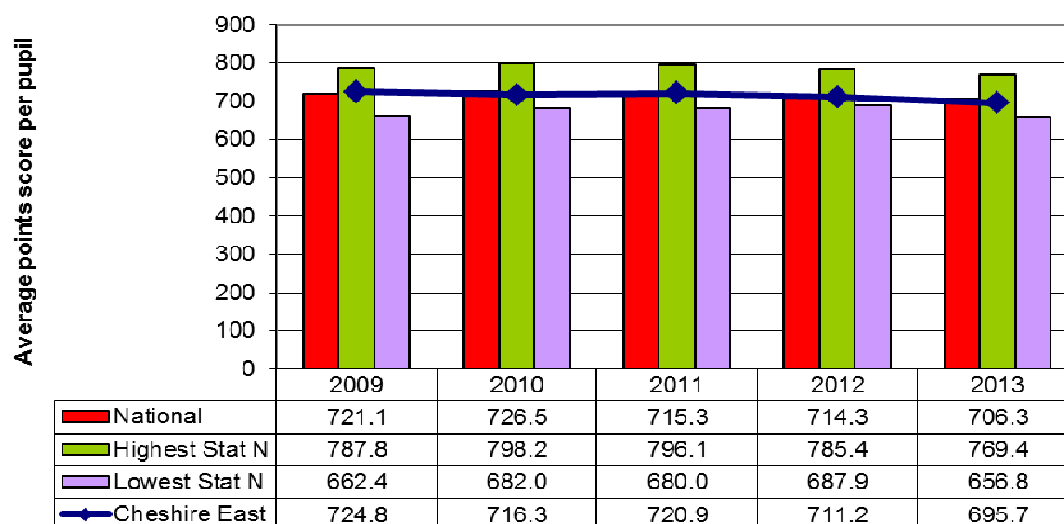
For post 16 achievements, the focus is on average point score per pupil and average point score per entry. All post 16 qualifications are assigned point scores enabling different qualifications such as A-levels and BTECs to be compared. Also we have provided information on the percentage of GCE A level entries that achieve grades A* to A, and A* to E, however this data is only available from 2010 when the A* grade was introduced.

The graphs and tables below show Cheshire East's achievement for these indicators between 2009 and 2013, with comparisons to national and statistical neighbour averages.

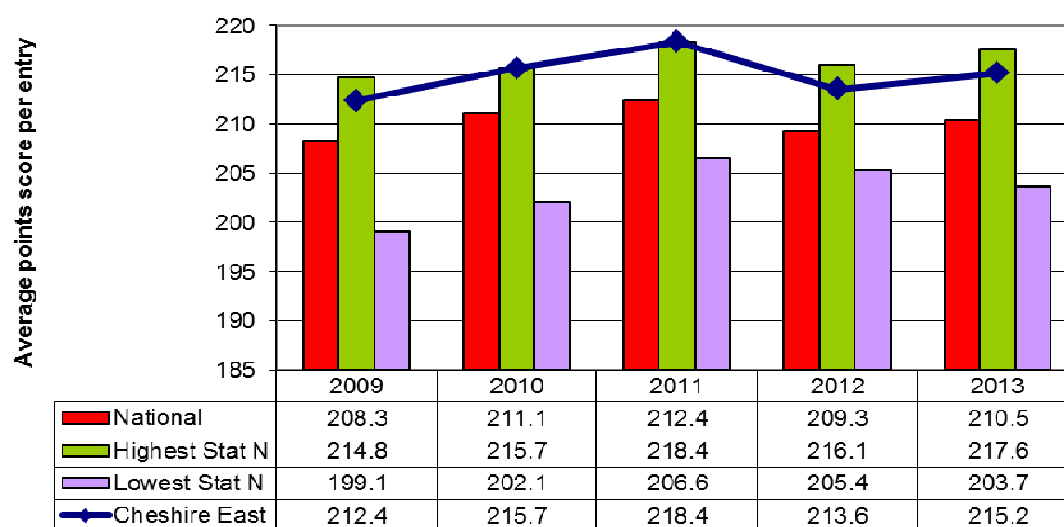
Key Messages

- Cheshire East is ranked 3rd when compared to statistical neighbours for the average points score per entry and 8th for average points score per candidate.
- Cheshire East is ranked 24th nationally for the average points score per entry and 73rd for average points score per candidate.
- The 2013 average points score per entry of 215.2 equates to a grade C pass at A level.
- Cheshire East is ranked 5th when compared to statistical neighbours for both the percentage of A level entries achieving A* to A grades and for A level entries achieving grades A* to E.
- Cheshire East is ranked 43rd nationally for the percentage of A level entries achieving A* to A grades and 37th for the percentage of A level entries achieving A* to E grades.

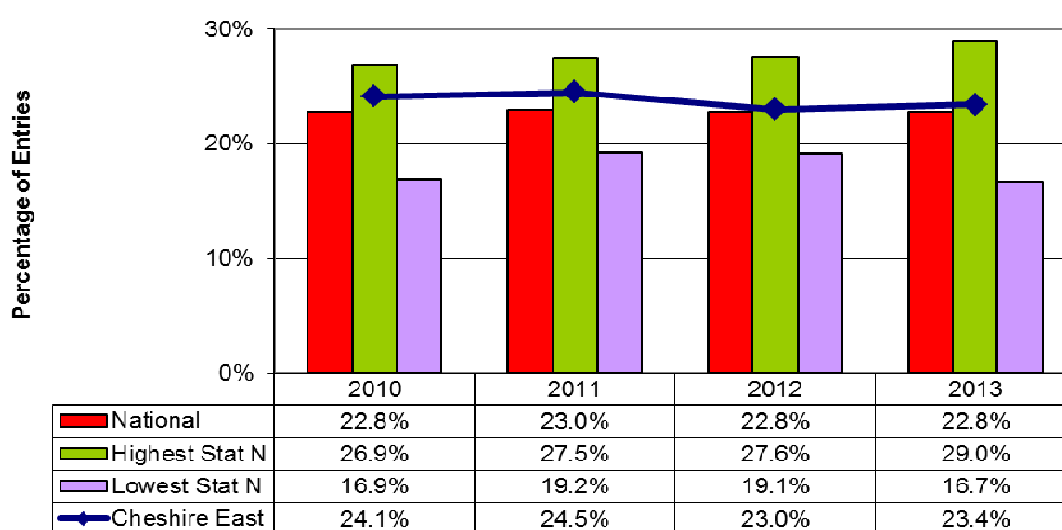
Post 16 - Average points score per pupil



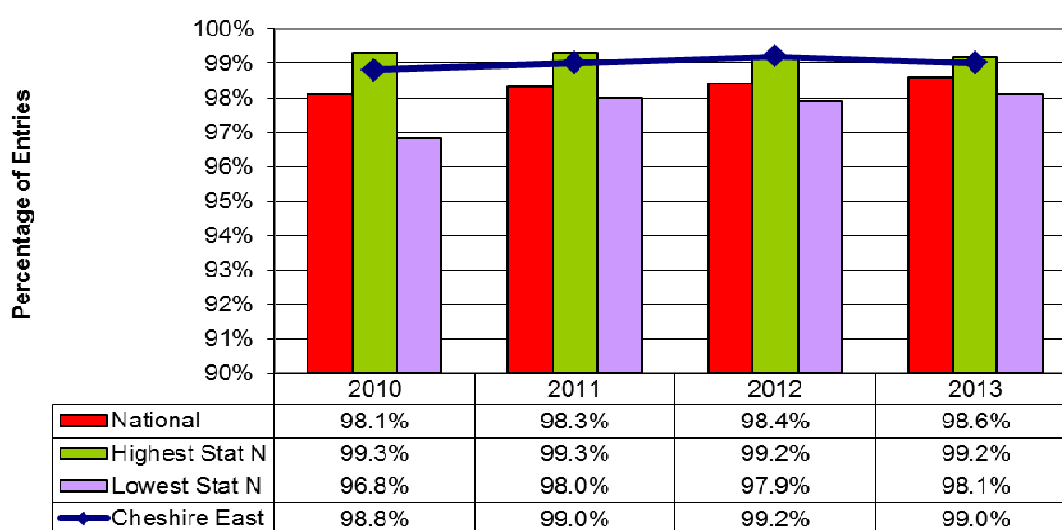
Post 16 - Average points score per entry



Percentage of A level entries gaining A* to A grades



Percentage of A level entries gaining A* to E grades



Key Areas for Development : Post 16

- To further focus on transition arrangements between School 6th Forms and FE Colleges particular in relation to specific groups (FSM) where there is a gap in information transfer between phases.
- To take the learning from the FSM pilot and apply this to all schools in closing the achievement gap between FSM and Non FSM outcomes (see detailed report in Section 9)

7. Attendance and Persistent Absence

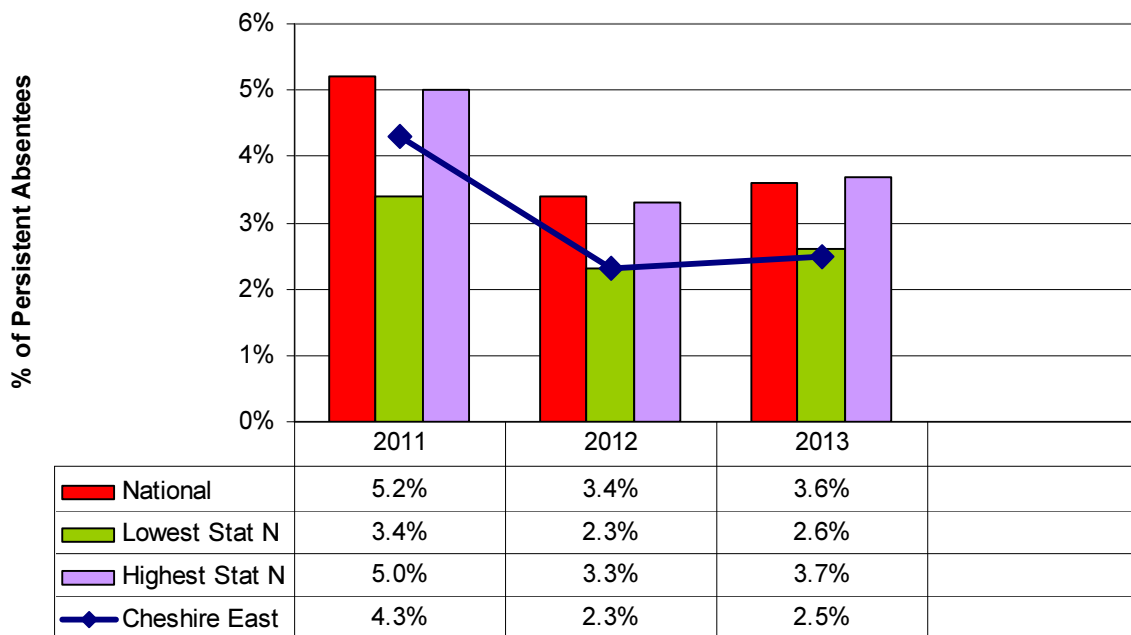
The focus in recent years has been on pupils who are persistently absent from school. A Persistent Absentee (PA) is defined as a pupil having an attendance of 85% or less. Unlike most charts, the lower the PA figure, the better the performance.

Each year Cheshire East Education Welfare Service (EWS) raises their thresholds so as to set challenging targets for schools. Universal support is available to schools, to ensure that schools continue to make progress and maintain high attendance and low PA. In addition EWS input is targeted at schools sitting at or under the national average to support improvements; which is one factor in the year on year improvements.

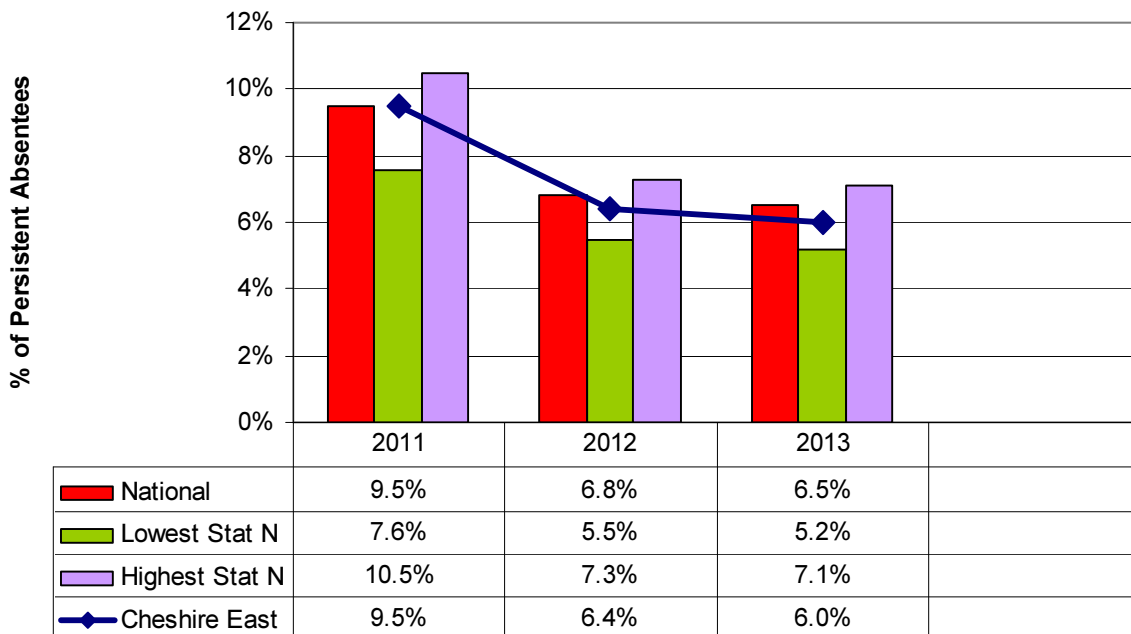
Key Messages

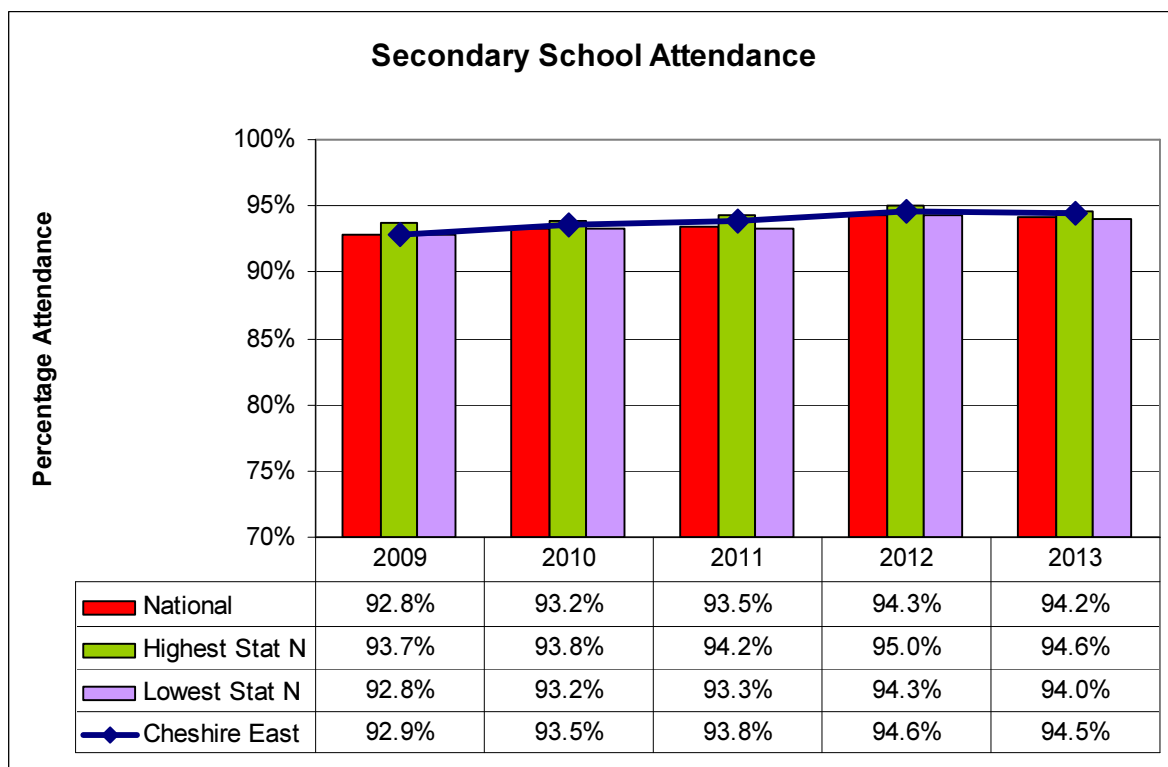
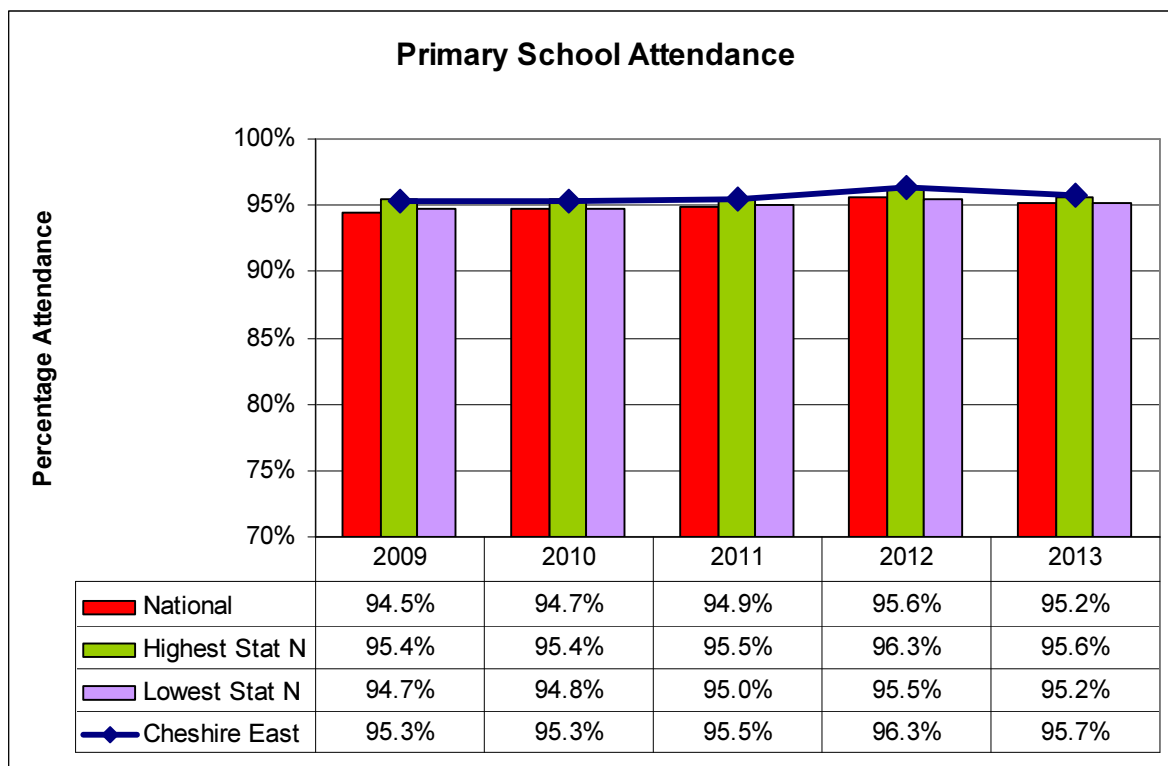
- The percentage of persistent absentees in Cheshire East Primary schools has fallen significantly since 2011 by from 4.3% to 2.5%. This is 1.1 percentage points below the 2013 national average. Cheshire East is ranked 1st when compared to its statistical neighbours.
- The percentage of persistent absentees in Cheshire East Secondary schools has fallen significantly since 2011 by 3.5 percentage points from 9.5% to 6.0%. In 2013 Cheshire East was 0.5 percentage points below the national average. Cheshire East is ranked 7th when compared to its statistical neighbours.
- Attendance in Cheshire East Primary schools has fallen in 2013, however it has remained above the national average. Cheshire East is ranked 1st when compared to its statistical neighbours.
- 2013 attendance in Cheshire East Secondary schools has fallen by 0.1 percentage points compared to last year on year over but it still remains above the national average. Cheshire East is ranked 2nd when compared to its statistical neighbours.

Primary School Persistent Absentees



Secondary School Persistent Absentees





The Performance of Vulnerable Groups : Attendance

Cared for Children : Attendance

Year	Attendance	Persistent Absence
2013	92.4%	16.3% (42 pupils)
2012	94.5%	4.1% (18 Pupils)
2011	93.5%	8.6% (38 Pupils)
2010	92.7%	10% (24 Pupils)

The table above includes all Cared for Children. The use of a dedicated IT system specifically to monitor the attendance of Cared for Children has improved the quality of the data for this cohort of pupils.

Key Areas for Development: Attendance

- To address leave of absence taken during term time.
- To further develop preventative work to increase attendance, reduce persistent absence and reduce the need for action through the judicial system.

8. Exclusions

There are two types of exclusions; permanent and fixed term. A pupil will only be permanently excluded in response to serious breaches of the school's behaviour policy or if allowing the pupil to remain in school would seriously harm the education and welfare of the pupil or others in the school. Fixed term exclusions are for a specified time and must not add up to more than 45 school days in a school year.

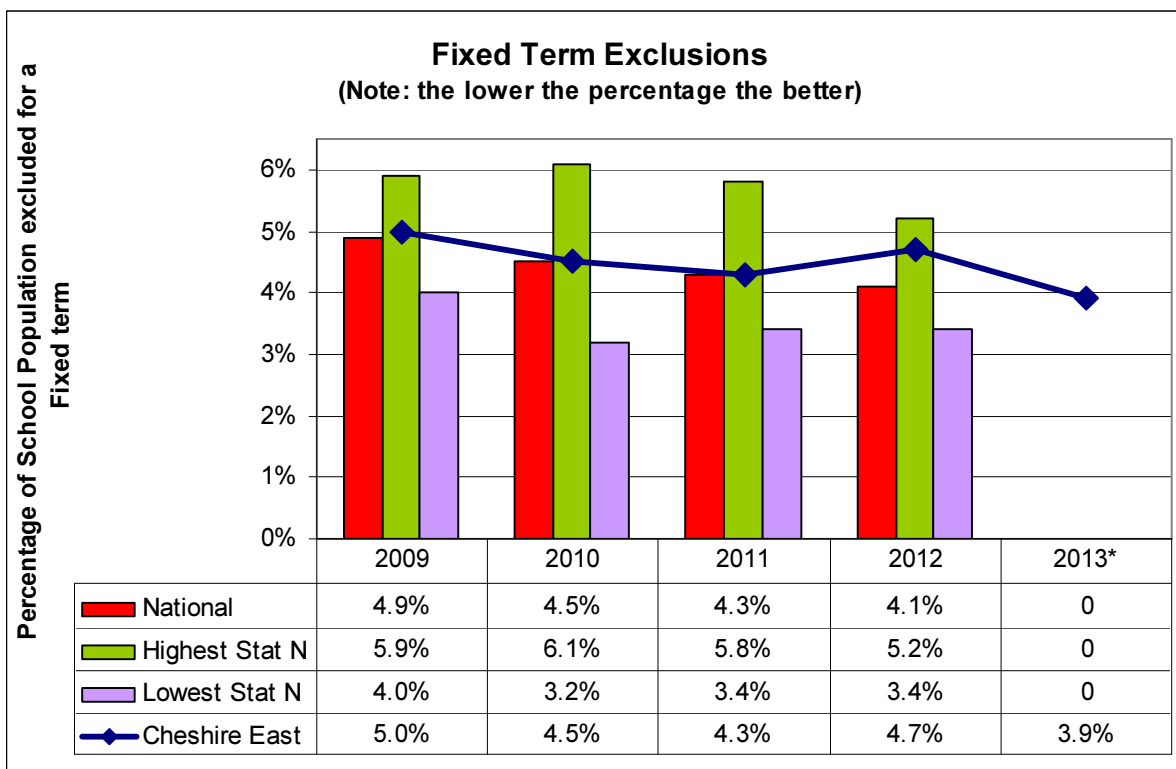
Key Messages

- The provisional data for 2013 shows a small drop in the number of permanent exclusions overall, with the number in secondary schools dropping to 32 but this being offset by the increases in the primary and special schools.
- The rate of permanent exclusions has risen slightly to 0.08 per cent of the school population or in other words is equivalent to 8 pupils in every 10,000. In 2012 Cheshire East was ranked 7th when compared to statistical neighbours.
- The provisional 2013 data for fixed term exclusions dropped by 380 to 1994.
- The rate of fixed term exclusions has dropped by almost 1 percentage point to 3.9 per cent of the school population or in other words is equivalent to 390 pupils in every 10,000. In 2012 Cheshire East was ranked 9th when compared to statistical neighbours.

	Number of Permanent Exclusions				
	2009	2010	2011	2012	2013*
Primary	1	0	0	5	6
Secondary	35	24	18	35	32
Special	0	6	2	0	1
Total	36	30	20	40	39

	Number of Fixed Term Exclusions				
	2009	2010	2011	2012	2013*
Primary	266	206	214	242	247
Secondary	2176	1942	1839	2097	1682
Special	54	82	58	35	65
Total	2496	2230	2111	2374	1994

*Please note that the 2013 data is provisional.



The Performance of Vulnerable Groups : Exclusions

Cared for Children : Exclusions

Year	Number of permanent exclusions	Number of episodes of FT exclusion	Number of pupils excluded having at least 1 FTE	Percentage of cohort having at least 1 FTE
2009-10	0	98	33	12.3
2010-11	0	98	35	12.4
2011-12	0	94	32	11.3
2012-13	0	100	30	11.7

In terms of all Cared for Children, there have been no permanent exclusions over the last 3 years. In terms of fixed term exclusions:

- There were pupils excluded in 2012-13, which was % of the Cared for Children cohort.
- There were 24 pupils excluded in 2011-12, which was 5.5% of the Cared for Children cohort.
- There were 228 pupils excluded in 2010-11, which was 6.3% of the Cared for Children cohort.

There were 19 pupils excluded in 2009-10, which was 7.8% of the Cared for Children

Key Areas for Development : Exclusions

- To continue to reduce the number of pupils receiving fixed term exclusions (FTE) by developing multi agency practices through early intervention.
- To support schools capacity in partnerships to intervene early to identify causal factors for behaviour and have appropriate interventions.
- To work particularly with primary schools to reduce permanent exclusions.

Appendix 1 - Latest Ofsted Inspection Outcomes (from reports published up to 31st January 2014)

Nursery and Primary School Inspections

Date of most recent Ofsted full inspection	School	Grade	Academy
Feb-12	Acton Church of England Primary School	Outstanding	
Oct-11	Adlington Primary School	Outstanding	
Jun-09	Alderley Edge Community Primary School	Good	
Oct-08	Alsager Highfields Community Primary School	Outstanding	
Feb-13	Ash Grove Primary School and Nursery	Outstanding	✓
Jun-09	Ashdene Primary School	Good	
Apr-13	Astbury St Mary's Church of England Primary School	Good	
Sep-12	Audlem St James' CE Primary School	Satisfactory	
Jun-13	Beechwood School	Satisfactory	
May-13	Bexton Primary School	Good	
Apr-13	Bickerton Holy Trinity CE Primary School	Good	
Nov-13	Black Firs Primary School	Good	
Sep-13	Bollinbrook Church of England Primary School	Satisfactory	
Jul-12	Bollington Cross Church of England Primary School	Good	
Dec-12	Bollington St John's Church of England Primary School	Good	
Sep-11	Bosley St Mary's Church of England Primary School	Good	
Nov-12	Brereton Church of England Primary School	Good	
Mar-12	Bridgemere Church of England Primary School	Satisfactory	
Jan-13	Brierley Primary School	Good	
Mar-12	Broken Cross Community School	Good	
Jul-07	Buglawton Primary School	Outstanding	
Nov-11	Bunbury Aldersey Church of England Primary School	Outstanding	
Dec-12	Calveley School	Satisfactory	
Mar-12	Chelford Church of England Primary School	Good	
Jun-11	Christ the King	Good	
Feb-13	Cledford Primary School	Satisfactory	
Nov-11	Cranberry Primary School	Satisfactory	✓
May-13	Daven Primary School	Good	
May-13	Dean Oaks Primary School	Good	
Oct-12	Dean Valley Community Primary School	Good	
Nov-11	Disley Primary School	Good	
Jan-11	Edleston Primary School	Good	
May-12	Egerton Primary School	Good	
Jul-09	Elworth Church of England Primary School	Good	
Dec-12	Elworth Hall Primary School	Satisfactory	
Dec-08	Excalibur Primary School	Outstanding	
Jan-11	Gainsborough Primary and Nursery School	Good	
Jan-12	Gawsworth Primary School	Good	
Nov-07	Goostrey Community Primary School	Outstanding	
Oct-12	Gorsey Bank Primary School	Good	
Feb-13	Haslington Primary School	Good	
Mar-07	Havannah Primary School	Outstanding	
Feb-09	Hermitage Primary School	Outstanding	
Jun-13	High Legh Primary School	Good	
Nov-11	Highfields Community Primary School	Outstanding	
Feb-12	Hollinhey Primary School	Good	
Mar-10	Holmes Chapel Primary School	Good	✓
Apr-12	Hungerford Primary School	Good	

Date of most recent Ofsted full inspection	School	Grade	Academy
Jun-09	Hurdsfield Community Primary School	Good	
Jul-13	Ivy Bank Primary School	Good	
Oct-13	Kettleshulme St James' Church of England Primary School	Good	
Mar-09	Lacey Green Primary School	Outstanding	✓
May-11	Leighton Primary School	Outstanding	✓
Jan-11	Lindow Community Primary School	Good	
Jan-13	Little Bollington Church of England Primary School	Good	
Sep-09	Lostock Hall Primary School	Outstanding	
Mar-08	Lower Park School	Outstanding	
May-13	Mablins Lane Community Primary School	Good	
Jun-10	Manor Park School and Nursery	Good	
Jan-10	Marlfields Primary School	Good	
Oct-11	Marton & District Church of England Primary School	Good	
Sep-11	Middlewich Primary School	Good	
Jun-12	Millfields Primary School and Nursery	Good	
Jun-12	Mobberley Church of England Primary School	Outstanding	
Feb-11	Monks Coppenhall Primary & Nursery School	Outstanding	
Mar-10	Mossley Church of England Primary School	Good	
Nov-11	Mottram St Andrew Primary School	Outstanding	✓
Mar-12	Nether Alderley Primary School	Good	
Mar-12	Oakefield Primary and Nursery School	Satisfactory	✓
Mar-11	Offley Primary School	Good	
Jun-12	Parkroyal Community School	Good	✓
Apr-09	Pear Tree Primary School	Good	
Sep-13	Pebble Brook Primary School	Satisfactory	
Jan-12	Peover Superior Endowed (Controlled) Primary School	Good	
Jun-12	Pikemere School	Good	
Jan-11	Pott Shrigley Church School	Outstanding	
Jun-07	Prestbury Church of England Primary School	Outstanding	
Feb-10	Puss Bank School	Good	
Oct-11	Rainow Primary School	Good	
Apr-13	Rode Heath Primary School	Good	
Feb-13	Sandbach Community Primary School	Good	
Oct-12	Scholar Green Primary School	Good	
Apr-13	Shavington Primary School	Satisfactory	
Dec-07	Smallwood Church of England Primary School	Outstanding	
Nov-10	Sound and District Primary School	Good	
Oct-13	St Alban's Catholic Primary School	Satisfactory	
Apr-09	St Anne's Catholic Primary School	Outstanding	
Nov-12	St Anne's Fulshaw Church of England School	Good	
Oct-11	St Benedict's Catholic Primary School	Good	
Mar-12	St Gabriel's Catholic Primary School	Outstanding	
May-12	St Gregory's Catholic Primary School	Good	
Feb-09	St John the Evangelist Church of England Primary School, Macclesfield	Good	
Jun-11	St John's C of E Primary School, Sandbach Heath	Good	
Jun-09	St Mary's Catholic Primary School (Congleton)	Good	
Jun-11	St Mary's Catholic Primary School (Crewe)	Good	
Oct-13	St Mary's Catholic Primary School (Middlewich)	Good	
Sep-09	St Oswald's Worleston Church of England Primary School	Good	
Mar-10	St Paul's Catholic Primary School	Outstanding	

Date of most recent Ofsted full inspection	School	Grade	Academy
May-13	St Vincent de Paul Catholic Primary School	Good	
Jun-09	Stapeley Broad Lane Church of England Primary School	Good	✓
Dec-13	Styal Primary School	Good	
Dec-12	The Berkeley Primary School, Wistaston	Good	
Mar-12	The Dingle Primary School	Good	
Sep-12	The Marlborough Primary School	Good	
Dec-09	The Quinta Primary School	Good	✓
Jul-12	Underwood West Primary School	Good	
Jun-09	Upton Priory School	Outstanding	
May-12	Vernon Primary School	Outstanding	
Nov-12	Vine Tree Primary School	Good	
Jun-10	Warmingham Church of England Primary School	Good	
Oct-13	Weaver Primary School	Good	
May-09	Weston Village Primary School	Good	
Jun-11	Wheelock Primary School	Outstanding	
Mar-11	Whirley Primary School	Good	
Sep-13	Willaston Primary School	Good	
Jun-12	Wilmslow Grange Community Primary & Nursery School	Good	
Sep-06	Windle Church of England Primary School	Outstanding	
Nov-12	Wistaston Church Lane Primary School	Outstanding	
Sep-13	Wistaston Green Primary and Nursery School	Outstanding	
Nov-10	Woodcock's Well Church of England Primary School	Good	
Jun-09	Worth Primary School	Outstanding	✓
Jan-12	Wrenbury Primary School	Good	
May-12	Wybunbury Delves Church of England Primary School	Good	
Jan-13	Wyche Primary School	Satisfactory	

Percentage of Primary Schools in each Grade

Grade	%
Outstanding	25
Good	64.5
Satisfactory/Requires Improvement	10.5
Inadequate	0

Secondary School Inspections

Date of most recent Ofsted full inspection	School	Grade	Academy
Apr-11	All Hallows Catholic High School	Outstanding	✓
Feb-13	Alsager School	Good	✓
Sep-08	Brine Leas High School	Outstanding	✓
Jan-10	Congleton High School	Good	✓
May-13	Eaton Bank School	Satisfactory	✓
Mar-13	The Fallibroome Academy	Outstanding	✓
Oct-07	Holmes Chapel Comprehensive School	Outstanding	✓
Oct-13	Kings Grove School	Satisfactory	
Nov-11	Knutsford High School	Good	✓
Sep-11	Malbank School and Sixth Form College	Good	
Jul-13	Middlewich High School	Good	
May-08	Poynton High School and Performing Arts College	Outstanding	
Jul-13	Ruskin Sports and Languages College - a Community High School	Satisfactory	
Sep-08	Sandbach High School and Sixth Form College	Outstanding	✓
Jan-13	Sandbach School	Satisfactory	✓
Nov-12	Shavington High School	Satisfactory	
Apr-13	Sir William Stanier Community School	Satisfactory	✓
Apr-12	St Thomas More Catholic High School	Good	✓
Nov-11	Tytherington High School	Good	
May-13	The Macclesfield Academy	Satisfactory	✓
Oct-13	Wilmslow High School	Good	

Percentage of Secondary Schools in each Grade

Grade	%
Outstanding	28.6
Good	38.1
Satisfactory/Requires Improvement	33.3
Inadequate	0

Special School Inspections

Date of most recent Ofsted full inspection	School	Grade	Academy
Feb-11	Adelaide	Outstanding	✓
Nov-09	Park Lane	Outstanding	
Nov-13	Springfield	Outstanding	
Nov-13	St John's Wood	Good	

Percentage of Special Schools in each Grade

Grade	%
Outstanding	75.0
Good	25.0

Appendix 2 – EYFSP School Level Results 2011 to 2013

Percentage of pupils achieving a good level of development at the end of the EYFSP

School	2011	2012	2013
Acton Church of England Primary School	68%	95%	54.5%
Adlington Primary School	63%	87%	66.7%
Alderley Edge Community Primary School	31%	77%	80.0%
Alsager Highfields Community Primary School	85%	89%	67.4%
Ash Grove Primary School and Nursery	54%	92%	80.0%
Ashdene Primary School	97%	98%	91.7%
Astbury St Mary's Church of England Primary School	76%	94%	36.8%
Audlem St James' CE Primary School	41%	84%	66.7%
Beechwood School	43%	56%	48.0%
Bexton Primary School	88%	90%	55.2%
Bickerton Holy Trinity CE Primary School	69%	75%	38.9%
Black Firs Primary School	58%	74%	33.3%
Bollinbrook Church of England Primary School	37%	78%	63.3%
Bollington Cross Church of England Primary School	64%	74%	72.4%
Bollington St John's Church of England Primary School	85%	69%	50.0%
Bosley St Mary's Church of England Primary School	50%	0%	50.0%
Brereton Church of England Primary School	52%	75%	56.0%
Bridgemere Church of England Primary School	88%	100%	45.5%
Brierley Primary School	68%	77%	37.9%
Broken Cross Community School	33%	80%	37.5%
Buglawton Primary School	24%	60%	46.7%
Bunbury Aldersey Church of England Primary School	73%	77%	68.8%
Calveley School	100%	100%	76.9%
Chelford Church of England Primary School	100%	100%	75.0%
Christ the King Catholic and C of E Primary School	53%	87%	54.8%
Cledford Primary School	64%	73%	54.3%
Cranberry Primary School	70%	73%	60.7%
Daven Primary School	57%	50%	33.3%
Dean Oaks Primary School	66%	76%	42.6%
Dean Valley Community Primary School	77%	97%	58.1%
Disley Primary School	100%	100%	74.1%
Edleston Primary School	60%	53%	21.9%
Egerton Primary School	61%	66%	43.5%
Elworth Church of England Primary School	78%	62%	75.0%
Elworth Hall Primary School	70%	58%	62.1%
Excalibur Primary School	48%	87%	71.0%
Gainsborough Primary and Nursery School	45%	37%	50.0%
Gawsworth Primary School	62%	81%	51.6%
Goostrey Community Primary School	87%	82%	86.7%
Gorsey Bank Primary School	97%	92%	88.1%
Haslington Primary School	47%	77%	66.7%

Havannah Primary School	78%	64%	68.2%
Hermitage Primary School	74%	78%	66.7%
High Legh Primary School	60%	68%	68.4%
Highfields Community Primary School	80%	80%	70.0%
Hollinhey Primary School	67%	50%	36.7%
Holmes Chapel Primary School	67%	90%	52.9%
Hungerford Primary School	75%	73%	43.3%
Hurdsfield Community Primary School	29%	77%	13.6%
Ivy Bank Primary School	52%	85%	52.6%
Kettleshulme St James' Church of England Primary School	80%	100%	100.0%
Lacey Green Primary School	62%	59%	43.3%
Leighton Primary School	72%	83%	55.0%
Lindow Community Primary School	81%	77%	35.7%
Little Bollington Church of England Primary School	50%	77%	27.3%
Lostock Hall Primary School	94%	69%	78.6%
Lower Park School	83%	85%	65.8%
Mablins Lane Community Primary School	28%	55%	46.7%
Manor Park School and Nursery	40%	57%	15.2%
Marlfields Primary School	53%	71%	64.0%
Marton & District Church of England Primary School	77%	93%	59.3%
Middlewich Primary School	60%	70%	46.7%
Millfields Primary School and Nursery	75%	97%	66.7%
Mobberley Church of England Primary School	96%	95%	76.7%
Monks Coppenhall Primary & Nursery School	35%	37%	24.2%
Mossley Church of England Primary School	80%	89%	64.7%
Mottram St Andrew Primary School	95%	88%	83.3%
Nether Alderley Primary School	68%	80%	40.0%
Oakefield Primary and Nursery School	53%	49%	59.3%
Offley Primary School	80%	82%	74.1%
Park Lane School	0%	0%	0.0%
Parkroyal Community School	72%	55%	51.6%
Pear Tree Primary School	66%	24%	61.3%
Pebble Brook Primary School	63%	56%	29.5%
Peover Superior Endowed (Controlled) Primary School	100%	100%	85.7%
Pikemere School	90%	90%	60.0%
Pott Shrigley Church School	80%	67%	81.8%
Prestbury Church of England Primary School	90%	89%	71.7%
Puss Bank School	67%	91%	64.9%
Rainow Primary School	63%	74%	66.7%
Rode Heath Primary School	64%	73%	40.0%
Sandbach Community Primary School	57%	73%	53.3%
Scholar Green Primary School	68%	75%	40.0%
Shavington Primary School	87%	93%	63.3%
Smallwood Church of England Primary School	39%	89%	57.1%
Sound and District Primary School	77%	85%	47.1%
Springfield Special School	0%	0%	0.0%
St Alban's Catholic Primary School	63%	96%	82.6%

St Anne's Catholic Primary School	77%	70%	73.3%
St Anne's Fulshaw Church of England School	52%	73%	70.0%
St Benedict's Catholic Primary School	93%	92%	75.9%
St Gabriel's Catholic Primary School	97%	97%	66.7%
St Gregory's Catholic Primary School	62%	63%	75.0%
St John the Evangelist C of E Primary School, Macclesfield	92%	82%	53.5%
St John's C of E Primary School	65%	59%	36.0%
St Mary's Catholic Primary School (Congleton)	85%	59%	56.0%
St Mary's Catholic Primary School (Crewe)	56%	68%	47.7%
St Mary's Catholic Primary School (Middlewich)	82%	71%	78.6%
St Oswald's Worleston Church of England Primary School	57%	40%	72.7%
St Paul's Catholic Primary School	83%	73%	56.3%
St Vincent de Paul Catholic Primary School	77%	69%	43.3%
Stapeley Broad Lane Church of England Primary School	63%	100%	70.0%
Styal Primary School	73%	60%	66.7%
The Berkeley Primary School, Wistaston	73%	91%	61.1%
The Dingle Primary School	82%	90%	47.2%
The Marlborough Primary School	84%	88%	70.0%
The Quinta Primary School	52%	74%	86.5%
Underwood West Primary School	51%	53%	18.2%
Upton Priory School	56%	67%	60.3%
Vernon Primary School	89%	95%	70.3%
Vine Tree Primary School	67%	77%	66.7%
Warmingham Church of England Primary School	82%	91%	20.0%
Weaver Primary School	93%	86%	45.2%
Weston Village Primary School	49%	79%	60.6%
Wheelock Primary School	77%	86%	50.0%
Whirley Primary School	72%	90%	66.7%
Willaston Primary School	67%	79%	38.7%
Wilmslow Grange Community Primary & Nursery School	80%	61%	45.9%
Windle Church of England Primary School	83%	88%	50.0%
Wistaston Church Lane Primary School	93%	88%	49.2%
Wistaston Green Primary and Nursery School	41%	62%	40.0%
Woodcock's Well Church of England Primary School	71%	58%	25.0%
Worth Primary School	50%	66%	89.7%
Wrenbury Primary School	76%	62%	47.6%
Wybunbury Delves Church of England Primary School	67%	69%	48.3%
Wyche Primary School	31%	59%	40.0%

Appendix 3 – Key Stage 2 School Results 2013

N.B. Results for schools with less than 6 pupils are suppressed

School	Read & Write & Maths L4 and above		Reading 2 or more levels progress		Writing 2 or more levels progress		Maths 2 or more levels progress	
	2012	2013	2012	2013	2012	2013	2012	2013
Acton CofE Primary School	95%	93%	100%	100%	100%	100%	94%	86%
Adlington Primary School	90%	77%	100%	100%	89%	69%	100%	100%
Alderley Edge Community Primary School	84%	93%	97%	96%	97%	92%	87%	96%
Alsager Highfields Community Primary School	92%	84%	97%	97%	97%	88%	97%	94%
Ash Grove Primary and Nursery School	90%	92%	100%	100%	100%	100%	100%	100%
Ashdene Primary School	93%	86%	95%	95%	86%	78%	97%	93%
Astbury St Mary's CofE Primary School	55%	80%	82%	73%	100%	100%	73%	73%
Audlem St James' CofE Primary School	85%	75%	100%	87%	88%	93%	96%	73%
Beechwood Primary School	68%	46%	90%	82%	97%	100%	80%	74%
Bexton Primary School	90%	89%	97%	100%	97%	100%	90%	94%
Bickerton Holy Trinity CofE Primary School	95%	100%	100%	89%	100%	89%	100%	100%
Black Firs Primary School	89%	79%	100%	97%	89%	97%	92%	82%
Bollinbrook CofE Primary School	77%	90%	92%	97%	100%	97%	85%	90%
Bollington Cross CofE Primary School	100%	92%	100%	92%	91%	100%	91%	85%
Bollington St John's CofE Primary School	75%	88%	88%	100%	100%	100%	63%	100%
Bosley St Mary's CofE Primary School	89%	SUPP	100%	SUPP	100%	SUPP	88%	SUPP
Brereton CofE Primary School	80%	100%	93%	92%	87%	100%	87%	100%
Bridgemere CofE Primary School	77%	67%	92%	67%	92%	67%	92%	100%
Brierley Primary School	83%	69%	100%	92%	100%	92%	100%	100%
Broken Cross Community School	36%	62%	80%	69%	90%	85%	60%	77%
Buglawton Primary School	96%	95%	100%	100%	100%	100%	100%	100%
Bunbury Aldersey CofE Primary School	97%	100%	100%	96%	100%	100%	100%	100%
Calveley Primary School	85%	100%	92%	94%	100%	100%	92%	100%
Chelford CofE Primary School	100%	57%	100%	100%	100%	86%	100%	71%
Christ the King Catholic and Church of England Primary	73%	68%	80%	94%	92%	76%	88%	82%
Cledford Primary School	69%	77%	76%	95%	71%	90%	80%	93%
Cranberry Primary School	66%	79%	90%	82%	93%	89%	75%	82%
Daven Primary School	90%	54%	90%	81%	95%	63%	90%	74%
Dean Oaks Primary School	80%	73%	86%	78%	88%	91%	86%	73%
Dean Valley Community Primary School	100%	95%	100%	100%	100%	94%	96%	100%
Disley Primary School	79%	90%	96%	90%	96%	95%	100%	100%
Edleston Primary School	88%	70%	100%	92%	100%	100%	100%	100%
Egerton Primary School	85%	65%	100%	88%	88%	60%	100%	88%
Elworth CofE Primary School	88%	86%	98%	89%	100%	100%	95%	89%
Elworth Hall Primary School	79%	71%	79%	87%	86%	88%	100%	93%
Excalibur Primary School	88%	80%	91%	90%	97%	100%	97%	93%
Gainsborough Primary and Nursery School	63%	60%	78%	93%	97%	98%	76%	91%
Gawsworth Primary School	81%	83%	100%	87%	92%	87%	85%	79%
Goostrey Community Primary School	91%	86%	97%	100%	85%	97%	97%	100%
Gorsey Bank Primary School	89%	98%	94%	100%	93%	98%	93%	100%
Haslington Primary School	80%	84%	85%	100%	98%	97%	90%	97%
Havannah Primary School	81%	74%	100%	84%	80%	95%	100%	84%
Hermitage Primary School	76%	94%	90%	87%	95%	94%	95%	94%

N.B. Results for schools with less than 6 pupils are suppressed

School	Read & Write & Maths L4 and above		Reading 2 or more levels progress		Writing 2 or more levels progress		Maths 2 or more levels progress	
	2012	2013	2012	2013	2012	2013	2012	2013
High Legh Primary School	69%	100%	94%	100%	75%	100%	81%	100%
Highfields Community Primary School	79%	72%	78%	82%	78%	93%	81%	93%
Hollinhey Primary School	73%	87%	92%	87%	83%	93%	75%	93%
Holmes Chapel Primary School	83%	88%	96%	93%	96%	95%	89%	91%
Hungerford Primary School	77%	80%	94%	89%	96%	98%	81%	93%
Hurdsfield Community Primary School	71%	58%	86%	100%	71%	67%	100%	75%
Ivy Bank Primary School	69%	75%	83%	89%	87%	89%	81%	94%
Kettleshulme St James CoFE (VA) Primary School	100%	80%	89%	80%	100%	90%	100%	80%
Lacey Green Primary Academy	93%	93%	100%	93%	97%	100%	95%	96%
Leighton Primary School	93%	89%	100%	96%	100%	100%	100%	95%
Lindow Community Primary School	60%	79%	92%	93%	85%	100%	92%	86%
Little Bollington CoFE Primary School	67%	70%	93%	89%	86%	100%	86%	90%
Lostock Hall Primary School	91%	90%	100%	86%	100%	100%	100%	90%
Lower Park School	96%	92%	98%	100%	98%	100%	98%	92%
Mablins Lane Community Primary School	65%	62%	96%	91%	82%	76%	76%	84%
Manor Park School and Nursery	86%	58%	86%	68%	93%	95%	96%	95%
Marlfields Primary School	68%	77%	92%	96%	88%	96%	80%	81%
Marton and District CoFE Aided Primary School	96%	72%	91%	96%	100%	68%	100%	88%
Middlewich Primary School	79%	87%	100%	92%	96%	94%	98%	100%
Millfields Primary School and Nursery	71%	69%	100%	77%	100%	100%	96%	81%
Mobberley CoFE Primary School	69%	91%	81%	100%	100%	100%	69%	91%
Monks Coppenhall Primary School	73%	73%	97%	93%	100%	98%	97%	89%
Mossley CoFE Primary School	74%	83%	94%	95%	94%	100%	88%	90%
Mottram St Andrew Primary Academy	92%	79%	91%	82%	95%	100%	96%	91%
Nether Alderley Primary School	86%	73%	100%	87%	100%	87%	100%	87%
Oakefield Primary and Nursery School	56%	62%	78%	93%	72%	96%	64%	100%
Offley Primary School	88%	95%	96%	93%	92%	100%	94%	95%
Parkroyal Community School	79%	81%	87%	88%	92%	88%	73%	85%
Pear Tree Primary School	87%	90%	97%	93%	97%	90%	97%	100%
Pebble Brook Primary School	83%	85%	94%	79%	83%	100%	89%	96%
Peover Superior Endowed Controlled Primary School	56%	100%	86%	100%	86%	100%	71%	100%
Pikemere School	77%	89%	93%	93%	97%	85%	79%	86%
Pott Shrigley Church School	SUPP	100%	SUPP	67%	SUPP	100%	SUPP	83%
Prestbury CoFE Primary School	96%	93%	100%	93%	95%	100%	95%	88%
Puss Bank School	81%	67%	100%	63%	100%	95%	89%	90%
Rainow Primary School	89%	89%	100%	94%	95%	100%	100%	100%
Rode Heath Primary School	84%	82%	71%	95%	87%	91%	97%	91%
Sandbach Community Primary School	73%	59%	100%	76%	100%	100%	100%	76%
Scholar Green Primary School	76%	80%	81%	93%	88%	93%	88%	93%
Shavington Primary School	77%	87%	97%	86%	89%	90%	91%	86%
Smallwood CoFE Primary School	94%	78%	94%	94%	100%	94%	100%	83%
Sound and District Primary School	88%	71%	100%	94%	94%	63%	94%	94%
St Alban's Catholic Primary School	83%	82%	85%	88%	83%	93%	87%	86%
St Anne's Catholic Primary School	93%	78%	100%	100%	100%	100%	96%	95%

N.B. Results for schools with less than 6 pupils are suppressed

School	Read & Write & Maths L4 and above		Reading 2 or more levels progress		Writing 2 or more levels progress		Maths 2 or more levels progress	
	2012	2013	2012	2013	2012	2013	2012	2013
St Anne's Fulshaw C of E Primary School	75%	87%	77%	93%	85%	93%	77%	100%
St Benedict's Catholic Primary School	95%	95%	100%	100%	100%	95%	100%	95%
St Gabriel's Catholic Primary School	94%	90%	94%	87%	97%	93%	94%	93%
St Gregory's Catholic Primary School	73%	93%	80%	100%	87%	100%	100%	100%
St John the Evangelist CofE Primary School	93%	83%	97%	96%	95%	100%	100%	91%
St John's CofE Primary School	81%	87%	90%	96%	85%	96%	90%	91%
St Mary's Catholic Primary School	89%	94%	75%	75%	81%	94%	100%	94%
St Mary's Catholic Primary School	89%	83%	96%	97%	96%	97%	100%	93%
St Mary's Catholic Primary School, Crewe	77%	79%	94%	91%	96%	98%	94%	83%
St Oswald's Worleston CofE Primary School	78%	82%	63%	90%	100%	90%	75%	90%
St Paul's Catholic Primary School	88%	73%	100%	73%	100%	93%	100%	80%
St Vincent's Catholic Primary School	83%	88%	93%	91%	86%	100%	93%	96%
Stapeley Broad Lane CofE Primary School	88%	93%	91%	97%	100%	97%	87%	97%
Styal Primary School	40%	93%	87%	85%	93%	100%	67%	92%
The Berkeley Primary School	93%	79%	100%	85%	100%	98%	100%	91%
The Dingle Primary School	88%	86%	94%	91%	96%	95%	96%	93%
The Marlborough Primary School	80%	87%	89%	93%	91%	93%	95%	86%
The Quinta Primary School	87%	97%	97%	100%	87%	100%	100%	97%
Underwood West Primary School	56%	46%	86%	79%	88%	96%	74%	85%
Upton Priory School	81%	84%	93%	88%	100%	98%	93%	94%
Vernon Primary School	93%	74%	92%	80%	92%	83%	95%	73%
Vine Tree Primary School	86%	96%	100%	100%	100%	100%	100%	96%
Warmingham CofE Primary School	100%	69%	100%	85%	100%	100%	100%	62%
Weaver Primary School	93%	80%	100%	90%	100%	97%	97%	100%
Weston Village Primary School	91%	81%	97%	81%	100%	100%	97%	97%
Wheelock Primary School	87%	93%	100%	100%	93%	100%	97%	100%
Whirley Primary School	77%	55%	93%	70%	97%	67%	86%	75%
Willaston Primary School	88%	80%	92%	80%	96%	90%	96%	77%
Wilmslow Grange Primary and Nursery School	83%	72%	97%	89%	97%	100%	93%	89%
Windle CofE Primary School	100%	SUPP	100%	SUPP	100%	SUPP	100%	SUPP
Wistaston Church Lane Primary School	92%	98%	100%	98%	100%	100%	100%	100%
Wistaston Green Primary and Nursery School	76%	85%	95%	95%	100%	98%	100%	100%
Woodcock's Well CofE Primary School	100%	70%	100%	80%	92%	80%	100%	60%
Worth Primary School	94%	94%	97%	90%	94%	100%	97%	100%
Wrenbury Primary School	91%	72%	86%	83%	86%	78%	90%	82%
Wybunbury Delves CofE Primary School	88%	83%	100%	100%	96%	100%	92%	97%
Wyche Primary School	64%	46%	86%	85%	71%	77%	64%	85%
Cheshire East	82%	81%	93%	90%	93%	93%	91%	90%
Congleton	83%	84%	93%	92%	92%	94%	92%	90%
Crewe	77%	75%	93%	89%	94%	95%	89%	90%
Knutsford	82%	80%	93%	92%	92%	92%	90%	92%
Macclesfield	81%	79%	91%	88%	93%	90%	88%	88%
Nantwich	87%	81%	95%	91%	94%	93%	92%	93%

N.B. Results for schools with less than 6 pupils are suppressed

School	Read & Write & Maths L4 and above		Reading 2 or more levels progress		Writing 2 or more levels progress		Maths 2 or more levels progress	
	2012	2013	2012	2013	2012	2013	2012	2013
Poynton	92%	86%	97%	89%	95%	95%	97%	89%
Wilmslow	84%	87%	93%	93%	92%	93%	91%	92%

Appendix 4 - KS4 School Level Results 2011 & 2013
Percentage of pupils achieving 5+ A*-C grades at GCSE

School	5+ A*-C incl E & M			5+ A*-C		
	2011	2012	2013	2011	2012	2013
All Hallows Catholic College	58%	70%	66%	94%	95%	89%
Alsager School	71%	64%	73%	85%	86%	87%
Brine Leas School	80%	72%	67%	97%	97%	94%
Congleton High School	69%	64%	60%	93%	92%	98%
Eaton Bank School	63%	52%	68%	75%	73%	85%
The Fallibroome Academy	72%	64%	69%	82%	83%	89%
Holmes Chapel Comprehensive School	81%	80%	73%	92%	93%	92%
Kings Grove School	46%	40%	45%	77%	85%	79%
Knutsford High School	63%	64%	57%	88%	93%	79%
The Macclesfield Academy	40%	60%	53%	56%	81%	93%
Malbank School and Sixth Form College	63%	63%	68%	86%	88%	91%
Middlewich High School	54%	56%	49%	70%	70%	62%
Poynton High School	71%	70%	74%	91%	90%	90%
Ruskin Sports College - A Community High School	50%	43%	40%	63%	84%	73%
St Thomas More Catholic High School	80%	70%	67%	97%	91%	92%
Sandbach High School and Sixth Form College	83%	75%	75%	94%	93%	94%
Sandbach School	71%	52%	63%	75%	67%	80%
Shavington High School	63%	59%	44%	83%	67%	84%
Sir William Stanier Community School	35%	36%	43%	79%	72%	76%
Tytherington High School	62%	54%	69%	74%	69%	80%
Wilmslow High School	70%	74%	65%	80%	81%	74%
Cheshire East	64%	62%	62%	83%	83%	84%
Congleton	61%	64%	67%	74%	83%	87%
Crewe	52%	48%	47%	79%	79%	80%
Knutsford	63%	64%	57%	88%	93%	79%
Macclesfield	61%	62%	65%	78%	81%	87%
Nantwich	71%	67%	68%	91%	63%	92%
Poynton	71%	70%	74%	91%	90%	90%
Wilmslow	70%	74%	65%	80%	81%	74%

Percentage of pupils achieving the English Baccalaureate

School	2011	2012	2013
All Hallows Catholic College	14%	14%	20%
Alsager School	18%	21%	16%
Brine Leas School	29%	24%	35%
Congleton High School	14%	15%	29%
Eaton Bank School	11%	13%	21%
The Fallibroome Academy	29%	26%	32%
Holmes Chapel Comprehensive School	26%	18%	31%
Kings Grove School	5%	4%	5%
Knutsford High School	16%	13%	30%
The Macclesfield Academy	7%	10%	20%
Malbank School and Sixth Form College	7%	10%	12%
Middlewich High School	9%	10%	8%
Poynton High School	33%	33%	44%
Ruskin Sports College - A Community High School	15%	7%	16%
St Thomas More Catholic High School	23%	23%	34%
Sandbach High School and Sixth Form College	28%	31%	30%
Sandbach School	12%	13%	22%
Shavington High School	2%	9%	9%
Sir William Stanier Community School	2%	2%	8%
Tytherington High School	30%	36%	44%
Wilmslow High School	25%	34%	31%
Cheshire East	18%	19%	25%
Congleton	16%	18%	23%
Crewe	8%	8%	13%
Knutsford	16%	13%	30%
Macclesfield	22%	24%	30%
Nantwich	18%	17%	24%
Poynton	33%	33%	44%
Wilmslow	25%	34%	31%

Appendix 5 - Post 16 School Level Results 2011, 2012 & 2013
Average point score per pupil and per entry.

School	A-Level APS per pupil			A-Level APS per entry		
	2011	2012	2013	2011	2012	2013
All Hallows Catholic College	917	718.3	874.2	229.9	214.7	216.9
Alsager School	767.9	710.5	743.3	216.4	217.8	217.3
Brine Leas School*	-	709.7	797.6	-	214.8	220.9
Congleton High School	722.9	665.1	773.1	211.8	214.8	221.7
Eaton Bank School	742.2	710.2	739.6	211.7	208.8	213.3
Holmes Chapel Comprehensive School	732.8	741.2	769.3	207.1	212.8	218.3
Knutsford High School	752.4	667.8	741.3	212.9	200.4	211.9
Malbank School and Sixth Form College	736.6	689.5	648.4	213.5	213.1	204.4
Poynton High School	806.2	750.3	783.8	215.5	208.9	214.4
Sandbach High School and Sixth Form College	911.3	879.7	837	213.7	211	203.9
Sandbach School	NA	792.2	822.4	NA	201.2	208.8
The Fallibroome Academy	934.4	939.5	874.3	232	226.2	214.1
Tytherington High School	739.9	706.8	787.5	222.1	212.2	227.9
Wilmslow High School	806.9	742.6	778.6	234.5	220	220.3
Cheshire East	720.9	754.7	695.7	218.4	213.3	215.2
Congleton	767.7	778.2	792.8	211.3	210	212.3
Crewe	-	-	-	-	-	-
Knutsford	752.4	667.8	741.3	212.9	200.4	211.9
Macclesfield	856.7	867.7	842.5	225.5	222	220.1
Nantwich	736.6	689.5	725.1	213.5	213.1	214.0
Poynton	806.2	750.3	783.8	215.5	208.9	214.4
Wilmslow	806.9	742.6	778.6	234.5	220	220.3

Percentage of A level entries gaining A* to A and A* to E grades

School	% A* to A			%A* to E		
	2011	2012	2013	2011	2012	2013
All Hallows Catholic College	29.4%	25.8%	21.7%	99.3%	100.0%	100.0%
Alsager School	20.9%	20.8%	25.6%	99.7%	100.0%	100.0%
Brine Leas School *	-	24.8%	26.3%	-	100.0%	100.0%
Congleton High School	18.9%	23.5%	31.6%	100.0%	100.0%	100.0%
Eaton Bank School	23.4%	20.1%	21.1%	100.0%	99.5%	100.0%
Holmes Chapel Comprehensive School	23.3%	30.0%	23.7%	98.6%	99.6%	100.0%
Knutsford High School	22.1%	16.9%	18.4%	100.0%	99.6%	100.0%
Malbank School & Sixth Form College	21.7%	25.7%	15.3%	100.0%	99.6%	100.0%
Poynton High School	25.4%	19.3%	24.3%	100.0%	100.0%	100.0%
Sandbach High School & Sixth Form College	22.2%	21.0%	19.3%	99.2%	100.0%	100.0%
Sandbach School	28.0%	25.0%	26.3%	100.0%	99.3%	100.0%
The Fallibroome Academy	36.4%	34.9%	30.2%	99.8%	100.0%	100.0%
Tytherington High School	29.4%	24.7%	37.1%	100.0%	100.0%	100.0%
Wilmslow High School	32.6%	26.0%	25.8%	99.0%	99.8%	100.0%
Cheshire East	24.5%	23.0%	25.1%	99.0%	99.2%	99.9%

School	% A* to A			%A* to E		
	2011	2012	2013	2011	2012	2013
Congleton	20.0%	20.6%	23.9%	98.1%	98.1%	100.0%
Crewe	-	-	-	-	-	-
Knutsford	22.1%	16.9%	18.4%	100.0%	99.6%	100.0%
Macclesfield	29.3%	27.5%	30.4%	99.8%	100.0%	100.0%
Nantwich	21.7%	25.7%	20.8%	100.0%	99.6%	100.0%
Poynton	25.4%	19.3%	24.3%	100.0%	100.0%	100.0%
Wilmslow	32.6%	26.0%	25.8%	99.0%	99.8%	100.0%

Note: Brine Leas School did not have any 2011 Post 16 results as the sixth form only opened in 2010.

Appendix 6 – Cheshire East’s Statistical Neighbours

Each local authority has a set of statistical neighbours, authorities who are deemed similar in characteristics for comparative purposes. It was developed to enable comparisons of the performance of similar local authorities. Statistical neighbours are identified by finding, for each authority, the other authorities with the most similar values for a given set of variables.

These variables include:

- economic – income, wealth, employment;
- mobility;
- parental education;
- ethnic minorities;
- population – density, change, rural or urban;
- size.

Cheshire East’s neighbours are listed below ranked in order of their “closeness” (1 = closest).

Local Authority	Ranking
Cheshire West and Chester	1
Hampshire	2
Central Bedfordshire	3
Warwickshire	4
West Berkshire	5
Warrington	6
Solihull	7
North Yorkshire	8
Hertfordshire	9
Worcestershire	10